

40th Annual National Conference on Professional Nursing Education and Development

Lessons from OZ

Assuring Capabilities
for Future Nursing
Education & Practice

October 17-20, 2013

The Westin Kansas City
at Crown Center
Kansas City, Missouri



Sponsored by:



Sinclair
School of
Nursing



The University of Kansas



<http://PNEG.info>

Lessons from Oz

Assuring Capabilities for Future Nursing Education & Practice

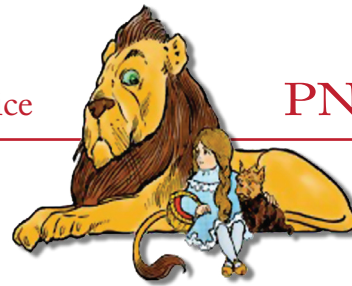


Table of Contents

Agenda-at-a-Glance	3
General Information	4
Course Co-Directors	6
Planning Committee	6
Pre-Conference Faculty	7
Conference Faculty	11
PNEG Social Media	12
Full Agenda	13
Thursday, October 17	13
Pre-Conference I: Meeting Today's Challenges in Continuing Professional Development (Pershing South)	13
Pre-Conference II: Fostering Concept-Based Learning (Century Ballroom A)	14
Pre-Conference III: Liberating Structures Workshop (Roanoke Room)	15
Pre-Conference IV: TeamSTEPPS and Simulation (University of Kansas School of Nursing Simulation Lab) ..	16
Friday, October 18	17
Concurrent Sessions A	17
Concurrent Sessions B	18
Concurrent Sessions C	18
Concurrent Sessions D	19
Concurrent Sessions E	20
Saturday, October 19	21
Concurrent Sessions F	21
Concurrent Sessions G	21
Concurrent Sessions H	22
Concurrent Sessions I	23
Sunday, October 20	25
Concurrent Sessions J	25
Concurrent Sessions K	25
Posters (Century Ballrooms B & C)	27
Westin Kansas City at Crown Center Ballroom Level Floor Plan	39
Registration Form	40

Lessons from Oz

Assuring Capabilities for Future Nursing Education & Practice



AGENDA AT A GLANCE

Thursday, October 17

Participants may register for either full- or half-day programs, or both half-day programs.

Pre-Conference I: Meeting Today's Challenges in Continuing Professional Development

8:25 a.m. Welcome and IntroductionsPershing South
 8:30 a.m. Session Begins
 Noon Hosted Luncheon
 4:00 p.m. Wrap Up and Adjourn (Immediately followed by wine and cheese reception.)

Pre-Conference II: Fostering Concept-Based Learning: Getting Started

10:00 a.m. Welcome and IntroductionsCentury Ballroom A
 10:10 a.m. Session Begins
 12:15 p.m. Box Lunch (provided)
 6:00 p.m. Adjourn

Pre-Conference III: Liberating Structures

8:30 a.m. Welcome and IntroductionsRoanoke Room
 8:45 a.m. Session Begins
 11:30 a.m. Chilled Plated Lunch (Provided by the University of Kansas School of Nursing)
 4:30 p.m. Adjourn

Pre-Conference IV: TeamSTEPPS and Simulation

1:00 p.m. Welcome and IntroductionsUniversity of Kansas School of Nursing Simulation Lab
 1:10 p.m. Session Begins
 4:30 p.m. Adjourn

Friday, October 18

7:00 a.m. Check-In, Continental Breakfast, Exhibits.... Century Foyer
 8:30 a.m. Welcome & Speaker Introduction Century Ballroom A
 8:45 a.m. Keynote Address: *Ellie Allison-Napolitano—Lessons from Oz on Wisdom and Resilience* Century Ballroom A
 9:45 a.m. Coffee Break with Exhibits Century Foyer
 10:15 a.m. Concurrent Sessions A
 11:15 a.m. Break
 11:25 a.m. Concurrent Sessions B
 12:25 p.m. Lunch (on your own) with Exhibits Century Foyer
 1:30 p.m. Concurrent Sessions C
 2:30 p.m. Refreshment Break with Exhibits Century Foyer
 2:50 p.m. Concurrent Sessions D
 3:50 p.m. Break
 4:00 p.m. Concurrent Sessions E
 5:00 p.m. Adjourn
 6:00 p.m. **Ruby Shoes Gala Reception and Poster Session** Century Ballrooms B & C

Saturday, October 19

7:00 a.m. Check-In, Continental Breakfast, Exhibits.... Century Foyer
 8:00 a.m. Welcome & Speaker Introduction Century Ballroom A
 8:15 a.m. Plenary Speaker: *Amy Blue—Creating Collaborative Care—The Oz Advantage* Century Ballroom A
 Break
 9:15 a.m. Concurrent Sessions F
 9:25 a.m. Concurrent Sessions G
 10:25 a.m. Coffee Break with Exhibits Century Foyer
 10:45 a.m. Concurrent Sessions G
 11:45 a.m. **Professional Nursing Educators Group (PNEG) Business Meeting** Everyone encouraged to attend! (Lunch available for purchase) Century Ballroom A
 Concurrent Sessions H
 Break
 2:00 p.m. Concurrent Sessions I
 2:10 p.m. Concurrent Sessions I
 3:10 p.m. Refreshment Break with Exhibits Century Foyer
 3:30 p.m. Speaker Introduction Century Ballroom A
 3:35 p.m. Plenary Speaker: *Judith J. Warren—QSEN, HITECH, EMRS, Meaningful Use and the Learning Health System of the Future* Century Ballroom A
 Invitation to PNEG 2014 & Adjourn
 4:35 p.m. Optional Special Event
 6:00 p.m. **"Savor Kansas City"** (More information on Page 26)

Sunday, October 20

7:00 a.m. Check-In Century Foyer
 7:30 a.m. Breakfast Round Tables Century Ballroom A
 8:30 a.m. Break
 8:40 a.m. Concurrent Sessions J
 9:40 a.m. Break
 9:50 a.m. Concurrent Sessions K
 10:50 a.m. Break
 11:00 a.m. Closing Remarks and Speaker Introduction Century Ballroom A
 11:10 a.m. Plenary Speaker: *Bowen White—Why Normal Isn't Healthy* Century Ballroom A
 12:10 p.m. Adjourn

Online Abstracts and Handouts

This year—in response to member requests at the 2012 PNEG conference—all invited, concurrent and poster-presenter abstracts and handouts received by the due date will be provided online only.

- Paid participants will receive notification and a link to the materials two weeks prior to the conference.
- Materials will remain available for a minimum of two weeks following the conference.
- Internet access will NOT be available in the conference rooms, so please download any desired session materials before attending.
- Materials submitted after the due date will be added to the website upon receipt.
- Presenters missing the due date for submitting materials will either provide handouts at their session and/or you may contact them directly for presentation materials.

Lessons from Oz

Assuring Capabilities for Future Nursing Education & Practice



General Information

Overview

This annual meeting will celebrate its 40th "Ruby" anniversary in 2013! Although the organizational affiliation and sponsorship have changed over time, the overarching goal of excellence in all aspects of nursing education has not changed. It continues to provide a vital forum for academic educators, staff developers, continuing educators, entrepreneurs and consultants. Regardless of setting, participants gather to discuss pressing issues and concerns, share ideas, network with professional colleagues, and leave rejuvenated with specific plans for action in their own work environment.

Nurses and Advanced Practice Registered Nurses

For four decades, this conference has been offered in collaboration with the Professional Nurse Educators Group (PNEG) and has served as a prominent vehicle for educators from the United States and other countries to strengthen their roles through learning, sharing, and networking with professional colleagues. Those involved with education in schools of nursing, continuing education, staff development, and entrepreneurs will find this meeting advantageous.

Objectives

- Discuss critical issues and concerns facing professional nursing education and development.
- Develop practical strategies for effectively managing the challenges encountered in the work environment.
- Explore how those in education and practice can successfully sustain competent learners and practitioners.
- Network with colleagues in academic, staff development and continuing education roles.

Location & Parking

All events will take place at the The Westin Kansas City at Crown Center, 1 East Pershing Road, Kansas City, MO. While attending this activity, you can be reached at 816-474-4400. Callers should ask for the 2013 PNEG Annual Conference. Please bring a sweater or jacket, since temperatures can be difficult to control in large rooms. Parking will be complimentary for temporary self-parking (in & out) and at a daily rate of \$21 for overnight self-parking.

Airport Transportation

Several options are available for transportation to and from Kansas City International Airport. For groups of three or more, you can contact the conference transportation service provider, Agenda USA, at 888-243-6325. Taxis at the airport and hotel are available for hire, including the Super Shuttle service. The cost of Super Shuttle service is approximately \$19 one way, and \$31 round-trip. Visit <http://www.supershuttle.com> for more information or to schedule shuttle service.

About Kansas City

An energetic city forged by a rich history, Kansas City is brimming with activities to keep visitors entertained—eclectic cuisine, swinging jazz, one-of-a-kind museums, a thriving arts scene and fantastic shopping. Part of the city's charm lies in its beauty, with an impressive network of boulevards, spacious parks and, of course, exquisite fountains. Discover dozens of unique museums, including the world-class Nelson-Atkins Museum of Art, the Negro Leagues Baseball Museum and the American Jazz Museum. Shopping is elevated to an art form at the beautiful Country Club Plaza and at Hallmark's Crown Center.

For more information about Kansas City area events, call the Visitor Information Line, 816-691-3800, toll-free (800) 767-7700, or visit www.visitkc.com/.

Accreditation

University of Kansas School of Nursing will award contact hours for successful completion of all continuing education activities. In order to receive continuing education credit, participants must sign in the day of the activity, complete all course requirements including online program evaluations, and attend at least 85% of live activities.

Nurses

Thursday, October 17 Pre-Conferences:

Meeting Today's Challenges	6.25 contact hours
Liberating Structures Workshop	6.25 contact hours
Concept-Based Learning	6.16 contact hours
TeamSTEPPS and Simulation	3.16 contact hours

Friday, October 18:	7.58 contact hours
Saturday, October 19:	5.67 contact hours
Sunday, October 20:	2.83 contact hours

University of Kansas School of Nursing is accredited as a provider of continuing nursing education by the American Nurses Credentialing Center's Commission on Accreditation.

Lessons from Oz

Assuring Capabilities for Future Nursing Education & Practice



General Information (continued)

Acknowledgments

We appreciate the support of our exhibitors and sponsors. While exhibition space for this event is full, there are four levels of sponsorships available, ranging from \$500 to more than \$5,000. For more information, visit the conference website at pneg.info or call Monya Floyd at 913-588-4478. Sponsors will be acknowledged at the conference.

Sponsors

Platinum Sponsor (\$5,000 & up)



Silver Sponsor (\$1,000–\$2,999)



Exhibitors

Please be sure to visit the following exhibitors to show your appreciation for their support of this meeting.



Scholarship of Teaching and Learning Cycle



Lodging

Our block of rooms at the Westin has sold out. However, additional blocks have been arranged at two other hotels. Receive a special rate of \$129 at the Courtyard by Marriott on the Plaza. Call 816-285-9755, [click here](#) or visit our website for a link to reserve your room as a PNEG attendee. The block expires October 1. A second block has been reserved at the Embassy Suites Kansas City–Plaza at a rate of \$149 for a single king suite. Call 816-756-1720, [click here](#) or visit our website for a link to reserve your room as a PNEG attendee. The Embassy Suites rate includes a full breakfast and an evening reception. Guestroom internet and parking fees are separate. The block also expires October 1.

Program Accessibility

We accommodate persons with disabilities. Please call 785-864-5823 or mark the space on the registration form, and a KU Continuing Education representative will contact you to discuss your needs. To ensure accommodation, please register at least two weeks before the start of the conference. See the nondiscrimination policy below.

The University of Kansas Medical Center is an AA/EO Title IX institution.

Refund & Cancellation Policy

A full refund of registration fees, less a \$15 administrative fee, will be available if requested in writing and received by October 3, 2013. No refunds will be made after that date. A \$30 fee also will be charged for returned checks. (Please note that if you fail to cancel by the deadline and do not attend, you are still responsible for payment.) KU Continuing Education reserves the right to cancel Lessons from Oz: The 40th Annual National PNEG Conference and return all fees in the event of insufficient registration. The liability of the University of Kansas is limited to the registration fee. The University of Kansas will not be responsible for any losses incurred by registrants, including but not limited to airline cancellation charges or hotel deposits.

Nondiscrimination Policy

The University of Kansas prohibits discrimination on the basis of race, color, ethnicity, religion, sex, national origin, age, ancestry, disability, status as a veteran, sexual orientation, marital status, parental status, gender identity, gender expression and genetic information in the University's programs and activities. The following person has been designated to handle inquiries regarding the non-discrimination policies: Director of the Office of Institutional Opportunity and Access, IOA@ku.edu, 1246 W. Campus Road, Room 153A, Lawrence, KS, 66045, (785) 864-6414, 711 TTY.

Lessons from Oz

Assuring Capabilities for Future Nursing Education & Practice



Page 6

PNEG.info

General Information (continued)

Course Co-Directors

Shirley J. Farrah, PhD, RN-BC, Assistant Dean, Nursing Outreach; Associate Teaching Professor, Sinclair School of Nursing, University of Missouri, Columbia, Mo.

Mary L. Gambino, PhD, RN, Assistant Dean for Community Affairs; Director of Nursing Continuing Education, University of Kansas School of Nursing, Kansas City, Kan.

Planning Committee

Karen Aufdemberge, BSN, RN, Senior Coordinator, Northwest Kansas Area Health Education Center, Hays, Kan.

Chito A. Belchez, MSN, RN-BC, Clinical Assistant Professor, University of Kansas School of Nursing, Kansas City, Kan.

Jana Braklow, MSN, RN, Olathe Medical Center, Olathe, Kan.

Kevin Briggs, MHSA, BSN, RN, BA, Nursing Education Department, Children's Mercy Hospital, Kansas City, Mo.

Vicki Brooks, RN, BC, Education Supervisor, Newman Regional Health, Emporia, Kan.

Kathy Carver, MN, RN, Nursing Professor, Johnson County Community College, Overland Park, Kan.

Linda Cook, BSN, RN, Clinical Education Coordinator, Bothwell Regional Health Center, Sedalia, Mo.

Susan W. Devaney, EdD, RN, CNL, Adjunct Professor, Central Methodist University, Fayette, Mo.

Shirley J. Farrah, PhD, RN-BC, Assistant Dean, Nursing Outreach, Associate Teaching Professor, MU Sinclair School of Nursing, University of Missouri, Columbia, Mo.

Jodi Fincher, MBA, BSN, RN, CCRN, FABC, Clinical Education Manager, Providence Health, Kansas City, Kan.

Carolyn D. Flint, MSN, RN-BC, Senior Education Specialist, Phelps County Regional Medical Center, Rolla, Mo.

Sara Fry, Continuing Education Coordinator, Missouri Nurses Association (MONA), Jefferson City, Mo.

Mary L. Gambino, PhD, RN, Assistant Dean for Community Affairs, Director of Nursing Continuing Education, and Clinical Assistant Professor, University of Kansas School of Nursing, Kansas City, Kan.

Carol Green, PhD, RN, CNE, Professor of Nursing, Graceland University, Independence, Mo.

Wanda K. Hoelscher, MSN, RN, CNE, Director of Education, St. Mary's Health Center, Jefferson City, Mo.

Lucy J. Hood, PhD, RN, Professor, Saint Luke's College of Health Sciences, Kansas City, Mo.

Ruth J. Jones, MSN, RN, Director of Nursing & Allied Health Programs, Moberly Area Community College, Moberly, Mo.

Arlinda Kinkead, BSN, RN, CCRN, CICU Unit Educator, University of Missouri Hospital and Clinics, Columbia, Mo.

N. Ellen Kisling, MSN, RN, Director, Education, Children's Mercy Hospitals and Clinics, Kansas City, Mo.

Jan Knudsen, MSN, RN, Director of Professional Practice, Carondelet Health, Kansas City, Mo.

Susan LaPlante, BSN, RN, BC, Clinical Educator/Staff Development Specialist, Phelps County Regional Medical Center, Rolla, Mo.

Michelle Lane, BSN, RN, CMSRN, Manager of Nursing Education, North Kansas City Hospital, Kansas City, Mo.

Susan Larson, PhD, RN, Dean and Professor, School of Nursing and Health Science, MidAmerica Nazarene University, Olathe, Kan.

Susan McCoy, MSN, BSN, RN, Clinical Educator, Capital Regional Medical Center, Jefferson City, Mo.

Sue McKee, PhD, RN, Associate Professor, Goldfarb School of Nursing at Barnes-Jewish College, St. Louis, Mo.

Julie A. Nauser, PhD, RN, Research College of Nursing, Kansas City Mo.

Gina Oliver, PhD, APRN, FNP-BC, CNE, Assistant Teaching Professor, University of Missouri Sinclair School of Nursing, Columbia, Mo.

Candace M. Parker, MS, RN, BC, CNS, APN, Associate Professor Nursing Program, Johnson County Community College, Overland Park, Kan.

M. Greta Price, BSN, RN, PCCN, Education Specialist, University of Kansas Hospital, Kansas City, Kan.

Janet Reagor, PhD, RN, Assistant Professor, Avila University, Kansas City, Mo.

Terri Schmitz, RN, Senior Coordinator, Eastern Kansas Area Health Education Center – Pittsburg, Pittsburg, Kan.

Nancy Schuenemeyer, RN, Supervisor Training, Boone Hospital Center, Columbia, Mo.

Marla Sutton, MS, Senior Program Manager, KUMC Continuing Education, Kansas City, Kan.

Karen Gahan Tarnow, PhD, RN, Clinical Associate Professor, University of Kansas School of Nursing, Kansas City, Kan.

Mary Beth Warren, MS, RN, Statewide AHEC Director; Statewide Area Health Education Office, Pittsburg, Kan.

Todd H. Winterbower, BS, Program Coordinator, MU Nursing Outreach, Columbia, Mo.

Jacki Witt, JD, MSN, APRN, WHNP-BC, Clinical Associate Professor, University of Missouri-Kansas City, Kansas City, Mo.

Jan Witzke, MSN, RN-BC, Assistant Professor, William Jewell College, Liberty, Mo.

Lessons from Oz

Assuring Capabilities for Future Nursing Education & Practice



Page 7

PNEG.info

Pre-Conference Faculty

ANCC Workshop: Meeting Today's Challenges in Continuing Professional Development

Mary S. Koithan, PhD, RN, CNS-BC, Associate Professor, Community & Systems Health Science Division, College of Nursing, University of Arizona, Tucson, Ariz. Chair, Commission on Accreditation 2004-2007; Appraiser, COA; Program Coordinator/Consultant for ANCC's Nursing Skills Competency Program.

Mary has taught undergraduate and graduate nursing since 1982. She has expertise in adult education, qualitative research, and has served in a variety of leadership roles with the American Nurses Credentialing Center, including the Commission on Accreditation and the Research Council. She currently serves as the program coordinator/consultant to the Nursing Skills Competency Programs at ANCC. She holds her BSN from the University of Cincinnati; her MSN in nursing and adult education from the University of Nevada, Las Vegas; and her PhD in nursing/research methods and theory development from the University of Colorado. She also completed a post-doctoral fellowship in complementary and alternative medicine research at the University of Arizona College of Medicine.

Kathy Chappell, MSN, RN, Director, Accreditation Program, American Nurses Credentialing Center, Silver Spring, Md.

Kathy has more than 25 years of nursing experience, including clinical practice as a direct care nurse in critical care and emergency nursing; hospital administration as an assistant head nurse and hospital supervisor; project management for programs such as the Magnet Recognition Program, NDNQI, quality improvement and shared governance; and hospital-system strategic planning for support of professional nursing practice including nursing clinical education, nursing student recruitment and research. As the director of the Accreditation program, Kathy is responsible for the accreditation of organizations as providers and approvers of continuing nursing education (Primary Accreditation), joint accreditation of organizations providing inter-professional continuing education (Joint Accreditation) and accreditation of courses validating nursing skills or skill sets (Nursing Skills Competency Program). Kathy received her baccalaureate in nursing with distinction from the University of Virginia, her master's of science in advanced clinical nursing from George Mason University and is a doctoral candidate at George Mason University.

Panel discussion features faculty and administrators from both practice and academic settings, including **Dorothy Bell**, MSN, RN-BC (Mayo Clinic), **Lyn Desilets**, EdD, RN-BC (Villanova University), **Martha DuHamel**, MPH (University of Washington), **Debra Hastings**, PhD, RN-BC, CNOR (Dartmouth Hitchcock Medical Center), **Renee Kumpula**, PhD, RN (University of Minnesota), and **Sonja Midyett**, MSM, BSN (Shawnee Mission Medical Center).

Liberating Structures Workshop

Jeff Cohn, MD, MHCM, President, Plexus Institute, Ambler, Pa.

After graduating from Clark University in Worcester, Mass., Jeff earned his MD at Jefferson Medical College in Philadelphia. He completed residency in internal medicine at Einstein, and fellowships in hematology and medical oncology at Emory University in Atlanta and Johns Hopkins in Baltimore. In 2005, he earned a master's degree in health care management, a program designed for physician leaders, from the Harvard School of Public Health. He was a practicing hematologist/oncologist, and for a time was involved in clinical research, representing community oncologists in the development of new clinical trials for patients with lymphoma.

At Einstein, Jeff became the first chief quality officer for the network. During his tenure in that position, Jeff won two successive awards for quality from the Premier healthcare alliance, a network of over 2,500 hospitals in the United States. He created and implemented the hospital's palliative care program and continues to have a passion for enhancing the quality of care at the end of life. He led Einstein's early work in implementing CUSP, the Comprehensive Unit-based Safety Program. He learned the model working under Peter Pronovost, MD, medical director of Johns Hopkins University's Center for Innovation in Quality Patient Care, and got Einstein involved in the CUSP learning network started by Johns Hopkins.

Lessons from Oz

Assuring Capabilities for Future Nursing Education & Practice



Page 8

PNEG.info

Pre-Conference Faculty

Lisa Kimball, PhD, Chair, Learning Programs, Plexus Institute, Bordentown, N.H.

Kimball founded Group Jazz in 2000 to produce high-engagement experiences for purposeful groups and organizations. She serves as a senior consultant on projects and initiatives to develop and apply methodologies to engage stakeholders in large-scale change efforts for groups—teams, communities, task forces, and organizations. Lisa is certified as a professional facilitator and has deep experience using a wide range of engagement processes including Open Space, Appreciative Inquiry, and Dialogue. She pioneered the development of “liberating structures”—a portfolio of interaction methodologies designed to change the conversation about significant challenges.

For the past 10 years, Dr. Kimball has worked with Plexus Institute, a non-profit social enterprise that applies ideas emerging from the science of complexity to complex problems such as the reduction of infection transmissions in hospitals, drop-out rates in schools, corporate change management initiatives, and quality improvement. Recent projects have included developing senior leadership program for the US Army, working the government of the Yukon Territories on customer service, designing and facilitating large-scale meetings for organizations such as IBM and Merck, and introducing liberating structures methodologies to the Center for Creative Leadership. Dr. Kimball received her B.A. from Sarah Lawrence College, her MAT from Wesleyan University in Social Science, and her Ph.D. from The Catholic University of American in Educational Psychology.

Fostering Concept-Based Learning: Getting Started

Nelda Godfrey, PhD, RN, ACNS-BC, FAAN, Associate Dean for Undergraduate Programs, Clinical Associate Professor, University of Kansas School of Nursing, Kansas City, Kan.

Dr. Godfrey completed her Bachelor of Science degree in nursing from the University of Missouri in Columbia, her master's in nursing (clinical practice) from the University of Kansas and her PhD in nursing from the University of Missouri. She is the president-elect of the Organizational Leadership Network through the American Association of Colleges of Nursing, and serves on the WIRED grant of Kansas City selection committee for masters' candidate funding. Dr. Godfrey has published in the areas of healthcare ethics, leadership in nursing and virtue ethics. She has also been a columnist in the *Kansas City Star* weekly publication, *NurseWeek*.

Prior to joining the KU School of Nursing, Dr. Godfrey was chair of the Department of Nursing at William Jewell College. She became a clinical nurse specialist in adult health nursing in 1994 and maintains American Nurses Credentialing Center (ANCC) certification in adult advanced nursing practice. She has received the University of Missouri Sinclair School of Nursing Alumni Achievement Award and the Governor's Teaching Award. Dr. Godfrey's teaching experience includes more than 10 years of teaching in the liberal arts core curriculum.

Chito Belchez, MSN, RN, Clinical Assistant Professor, University of Kansas School of Nursing, Kansas City, Kan.

Chito joined the University of Kansas School of Nursing faculty in 2012 and is teaching in the new concept-based BSN curriculum. Prior to joining the faculty at KU, Chito spent a number of years in staff development roles. Chito received his BA in philosophy from Seton Hall University, and his BSN and MN in healthcare Informatics from the University of Kansas.

Katherine A. Fletcher, PhD, RN, Clinical Associate Professor, University of Kansas School of Nursing, Kansas City, Kan.

Kathy has a 35-year history of teaching in undergraduate nursing. She currently teaches two major nursing courses in a conceptually based curriculum and uses a team-based learning strategy in a classroom of 104 students. She holds her BSN from the University of Nebraska and her MSN and PhD from the University of Kansas.

Lessons from Oz

Assuring Capabilities for Future Nursing Education & Practice



Page 9

PNEG.info

Pre-Conference Faculty

Jessica Gay, MSN, RNC, Clinical Instructor, University of Kansas School of Nursing, Kansas City, Kan.

Jessica has 12 years of experience in maternity nursing and is in her second year teaching undergraduates in the clinical and classroom settings for KU School of Nursing. Jessica will provide the perspective of a new faculty member coming in to a new concept-based curriculum. She will address how the new curriculum has altered her thinking and teaching methods, particularly in the clinical setting. Jessica holds her BSN from the University of Louisiana–Monroe and her MSN from the University of Texas–Austin.

Sharon Kumm, MN, MS, RN, CCRN, Clinical Associate Professor, University of Kansas School of Nursing, Kansas City, Kan.

Sharon has been teaching at the University of Kansas School of Nursing for more than 20 years. She has taught in both the traditional BSN and the RN-BSN programs. She was chair of the curriculum revision taskforce when the concept-based curriculum was developed in response to the newest BSN Essentials. Sharon holds a BS in biology from Central Missouri State University, a diploma from Research Hospital School of Nursing, an MS in molecular biology from Iowa State University, and an MN in physiological nursing from the University of Washington.

Delois Laverentz, MN, RN, CCRN, Clinical Instructor, University of Kansas School of Nursing, Kansas City, Kan.

As a faculty member of the University of Kansas School of Nursing, Delois has been involved in the curricular review and development of the concept-based undergraduate curriculum. She was involved in the selection of the concepts for the professional courses in our BSN curriculum. She teaches Professional Development 2: Image, Roles and Ethics using a concept-based approach, and helped select and define the concepts for this course. She completed her RN at Bishop Clarkson School of Nursing, her BSN from the University of Nebraska, and her MN from the University of Kansas.

Lois Linden, EdD, RN, Associate Professor, College of Saint Mary, Omaha, Neb.

Lois has taught nursing and education courses at every level of higher education, and has been involved in professional development of nurses in the clinical realm. Currently, she is teaching research and teaching and learning concept courses in a doctoral program. For the past year, Lois has served as consultant for the Texas Consortium of Community Colleges related to nursing concept analysis development. She holds her BS in pre-nursing from Midland University, her diploma from Immanuel Hospital School of Nursing, her MS in nursing education and maternal-child health from the University of Minnesota, and her EdD in health professions education from the College of Saint Mary in Omaha, Neb.

Lynelle N. B. Pierce, RN, MS, CCRN, CCNS, Clinical Assistant Professor, University of Kansas and University of Kansas Hospital, Kansas City, Kan.

Lynelle was instrumental in the concept selection and definition development now woven through the concept-based undergraduate curriculum at the University of Kansas School of Nursing. She also works with the Clinical Innovations Task Force to develop focused learning activities (FLAs) that provide an innovative approach to promote deeper learning in the clinical setting. Lynelle previously taught in the undergraduate program in the classroom and on-line settings. Her focus in clinical practice is on continuous improvement and the evolution of evidenced-based practice with multi-disciplinary teams in the critical care setting. Lynelle received her BSN at the University of Kansas and her MS in nursing from the University of Maryland at Baltimore.

Patricia Sharpneck, DNP, RN, CNE, NEA-BC, Director of BSN Undergraduate Programs and Associate Professor, The Breen School of Nursing, Ursuline College, Pepper Pike, Ohio.

Patricia teaches the Leadership and Policy courses at the undergraduate and DNP levels. She guided the faculty through a major curricular revision encompassing the use of concept-based methods to educate and teach, and has presented these approaches at statewide and national conferences such as the Ohio League for Nursing, QSEN and the AACN Baccalaureate Conference. Dr. Sharpneck is passionate about connecting classroom learning to clinical experiences, the use of multimodal techniques in teaching and innovative approaches to clinical teaching. Dr. Sharpneck holds her diploma from St. Vincent Charity School of Nursing, her BSN from Ursuline College, her MSN in nursing/nursing administration from the University of Akron and her DNP in nursing with an Education certificate from Case Western Reserve University.

Lessons from Oz

Assuring Capabilities for Future Nursing Education & Practice



Page 10

PNEG.info

Pre-Conference Faculty

TeamSTEPPS and Simulation

E. LaVerne Manos, DNP, RN-BC, Director of Master of Science in Health Informatics and Director of Nursing Informatics, ICAP-PEDS Simulation Principal Investigator, University of Kansas School of Nursing, Kansas City, Kan.

E. LaVerne Manos is the program director for the Master of Science in Health Informatics program at the KU School of Nursing. Dr. Manos is also program director for the Simulated E-hHealth Delivery System (SEEDS) partnership between KU Medical Center and Cerner Corporation, as well as a member of the core team in the interprofessional education center at the University of Kansas.

Dr. Manos is recipient and principal investigator/project director of a three-year \$998,000 HRSA grant. The Interprofessional Collaborative Acute Care Practice ICAP-Peds project will help at-risk children and their families transition smoothly from hospital to home to follow-up care. The grant team will facilitate the training and organization of interprofessional care teams skilled at developing comprehensive transitional care plans. Several innovative training techniques will be utilized to improve care and patient outcomes.

April Roche, MBA, Assistant Director of the Learning Lab, ICAP-PEDS Simulation Co-Coordinator; University of Kansas School of Nursing, Kansas City, Kan.

In addition to her position as assistant director of the Learning Lab, April is the project manager for the Academic Electronic Health Record (AEHR) implementation at KU School of Nursing. She works with the director to run the daily activities of the lab and provides guidance to faculty in developing simulations and developed the technical implementation that combines simulation with AEHR. She is a certified professional in electronic health records through Health IT Certification. She holds her BS in CIS through Missouri State University and her MBA in MIS through the University of Missouri–Kansas City.

Mary Meyer, MS, RN, APRN, Clinical Skills Laboratory Director, ICAP-PEDS Simulation Co-Coordinator, University of Kansas School of Nursing, Kansas City, Kan.

Mary N. Meyer, is an assistant professor at the KU School of Nursing and director of the Learning Laboratory. In her position as director, she collaborates with both undergraduate and graduate faculty to provide realistic simulation environments for acute care, outpatient and home settings, and manages and mentors graduate teaching assistants. Her classroom responsibilities include teaching Nursing Techniques I and II and serving on the Interprofessional Clinical Resource Advisory Committee for the KUMC campus.

Prior to coming to the KU School of Nursing, Meyer was director of clinical excellence for Research Medical Center. She has also held positions as instructor, critical care staff nurse, graduate teaching assistant and nurse clinician. Mary received her diploma as a Registered Nurse from Research Medical Center School of Nursing, her BSN from Webster University, and her MS from University of Kansas School of Nursing. She is currently completing her PhD and the University of Kansas School of Nursing.

Kristy Johnston, MSW, ICAP-PEDS Project Manager, University of Kansas School of Nursing, Kansas City, Kan.

Kristy has spent the majority of her adult career as a leader in educational program development. Her expertise is in building and growing educational programs from the ground up. She is currently doing just that at KUMC, creating a sustainable interprofessional practice educational program. Kristy has a broad background in psychology and education, with specific training and expertise in new program design and project planning. Previously, Kristy led all operational and strategic planning components of a distance learning company for Children's Hospitals. Ms. Johnston has her BA in psychology from William Jewell College and her MS in clinical social work from the University of Kansas. In addition she has post-graduate training as a master's facilitator.

Lessons from Oz

Assuring Capabilities for Future Nursing Education & Practice



Page 11

PNEG.info

Conference Faculty

Friday Keynote Address—Lessons from Oz on Wisdom and Resilience

**Elle Allison-Napolitano, PhD**, Founder of WisdomOut, Danville, Calif.

Elle is a self-proclaimed “wisdom geek.” From 2000, when she stumbled on a line in a textbook on adult learning that said, “Wisdom is the pinnacle of adult thought,” she has devoted herself to its study. Back in 2006, she wrote her dissertation on the nature of wisdom in nurses, and has found great joy in translating wisdom into practical applications, and in helping leaders, teams and organizations bring their wisdom out. Elle lives in the San Francisco Bay area with her husband and their 16-year-old Vizsla dog. Elle received her BS in education from Illinois State University, her MA from Northeastern Illinois University in education, and her PhD from the University of New Mexico in organizational learning. She has just published a new book, *Flywheel: Transformational Leadership Coaching for Sustainable Change* (Corwin Press, 2013) — a guide for leaders who want to learn how to coach their peers and colleagues who are at the helm of important work.

Saturday Morning Plenary—Creating Collaborative Care: The Oz Advantage

**Amy Blue, PhD**, Associate Dean for Educational Affairs, University of Florida College of Public Health and Health Professions; Associate Vice President for Interprofessional Education, UF Health Office of the Senior Vice President for Health Affairs, Gainesville, Fla.

Amy has been involved in health profession education with an emphasis on interprofessional education (IPE) for several years, and engaged in several national initiatives associated with IPE, including serving on the panel that developed the IPE core competencies and a project funded by the Robert Wood Johnson Foundation examining best practices, including assessments in IPE. She received her BA in anthropology from the University of California, San Diego and both her MA and PhD in medical anthropology from Case Western Reserve University.

Saturday Afternoon Plenary—QSEN, HITECH, EMRS, Meaningful Use and the Learning Health System of the Future

**Judith J. Warren, PhD, RN, BC, FAAN, FACMI**

Judy recently retired from the University of Kansas School of Nursing, where she was the Christine A. Hartley Centennial Professor of Nursing, director of the Health Informatics graduate program, and assistant director of the Frontiers Heartland Institute of Clinical and Translational Research’s Center for Biomedical Informatics. She developed, in partnership with Cerner Corporation, the Simulated E-hHealth Delivery System (SEEDS), adapting electronic health record software to teach students how to analyze data from virtual patient case studies, simulations and clinical experiences, while developing informatics competencies. She is a member of the National Quality Forum’s (NQF) Health Information Technology Advisory Committee. She serves on the Content Committee and the Nursing Special Interest Group of the International Health Terminology Standards Development Organization (IHTSDO), which develops SNOMED CT. She is a member of the Quality and Safety Education for Nurses (QSEN) faculty. She is a former member of the National Committee on Vital and Health Statistics (NCVHS), co-chair of its Standards Subcommittee, and member of the Executive Subcommittee and Quality Subcommittee. Dr. Warren is a Fellow in both the American Academy of Nursing and the American College of Medical Informatics. She has taught, published, and conducted research in nursing informatics since 1998.

Lessons from Oz

Assuring Capabilities for Future Nursing Education & Practice



Page 12

PNEG.info

Conference Faculty

Sunday Morning Plenary—Creating Collaborative Care: The Oz Advantage



Bowen White, MD, Stress Technologies, Overland Park, Kan.

Bowen F. White, MD, combines the talents and expertise of a physician, speaker, consultant and author. He travels the world conducting seminars, consulting and speaking to public and private organizations. His programs emphasize the need for individuals to take responsibility for their own health and well-being as he helps organizations create suspiciously healthy workplaces. Bowen has been an educator (doctor), not a medicator (physician), since 1984—after stopping family practice and going to 90-minute sessions per patient. His goal was to take a healing journey with them as a partner, not to fix them but help them learn what they could do to help themselves and see what their “problem” had to teach them that they needed to change. Bowen says, “Their courage to change inspires me still, although I no longer see patients. What they taught me, I share with others inside and outside of healthcare.” Bowen has his BA in political science from Kansas University, a BA in chemistry from the University of Missouri–Kansas City, and his MD from Kansas University. He is board-certified in family practice. Dr. White contributes his time to The Gesundheit! Institute and is a founding board member for the National Institute for Play. He is the author of two books: *Why Normal Isn't Healthy* and, with John MacDougal, *A Clinician's Guide to Spirituality*. In addition, he created two audio tape series: *The Cry of the Heart* and *Dr. White's Complete Stress Management Kit*.

Join the Conversation

Connect with us before, during and after *Lessons from Oz* with our social media accounts! Get updates about conference-specific details, connect with our speakers and your fellow participants, leave comments and much more. Click the icons below or scan the QR codes to access our pages.



Twitter: @MyPNEG
#2013PNEG



Facebook: <https://www.facebook.com/2013PNEG>



LinkedIn: <http://www.linkedin.com/groups?gid=1621187>



Lessons from Oz

Assuring Capabilities for Future Nursing Education & Practice



FULL AGENDA

Thursday, October 17, 2013

PRE-CONFERENCE I

ANCC Workshop: Meeting Today's Challenges in Continuing Professional Development

Full-Day Session • 6.25 CH



Many of us know the basics of high-quality continuing nursing education activities. We can write behavioral objectives, develop content outlines, and calculate contact hours. So what now? If you want to elevate the level of your practice in continuing professional development, be it in a practice or academic setting, this workshop is for you. Whether you are a staff developer, manager, trainer, academic faculty or continuing educator, and regardless of your experience in the field, this is an opportunity to learn from the experts and from each other as to what works—and what doesn't—in the real world, where there are too few resources and too many demands. You will discuss, gain insight into, and learn proven strategies to handle those little (and not so little) issues that we all wrestle with. You do not have to be a nurse to attend this workshop. It is applicable to all individuals involved in planning CE for the health professions.

This full-day educational session will include:

- Strategies to evaluate learning needs in meaningful ways.
- Methods to identify quality and performance gaps.
- Opportunity to design an outcomes evaluation that measures effectiveness.
- Mitigating systems factors that impact desired outcomes and performance.
- Ways to facilitate behavior change.
- Strategies to improve interprofessional collaborative practice.

Objectives

At the conclusion of this educational session, participants will be able to:

- Discuss issues that are facing today's nurses that are amenable to educational interventions.
- Describe methods that can be utilized to identify practice gaps.
- Using a case-based approach, conduct a gap analysis.
- Analyze linkages between identified gaps and teaching/learning strategies.
- Design an educational activity based on gap analysis.

This is not an accreditation workshop.

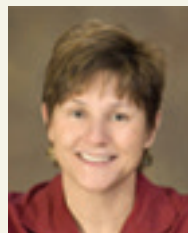
Agenda for PRE-CONFERENCE I:

- 8:00 a.m. Check-In and Continental Breakfast.....Century Foyer
- 8:00 a.m. Welcome & Introductions Pershing South
- 8:30 a.m. *Meeting the Educational Needs of Today's Nurse*
Mary Koithan, PhD, RN, CNS-BC, and **Kathy Chappell**, MSN, RN
- 9:15 a.m. *Planning Challenges: Needs assessment, quality and performance gaps, and planning for outcomes*
- 10:15 a.m. Break
- 10:30 a.m. *Practice What You have Learned*
- 11:30 a.m. *Planning the Educational Activity*
- Noon Hosted Luncheon
- 12:45 p.m. *Practice Designing the Activity*
- 1:45 p.m. *Staring Down the Challenges (Panel Discussion)*

Dorothy Bell, MSN, RN-BC (Mayo Clinic), **Lyn Desilets**, EdD, RN-BC (Villanova University), **Martha DuHamel**, MPH (University of Washington), **Debra Hastings**, PhD, RN-BC, CNOR (Dartmouth Hitchcock Medical Center), **Renee Kumpula**, PhD, RN (University of Minnesota), **Sonja Midyett**, MSM, BSN (Shawnee Mission Medical Center)

- 2:45 p.m. Break
- 3:00 p.m. *The Interprofessional Challenges*
Kathy Chappell
- 3:30 p.m. *Any Remaining Challenges: Ask the Experts*
All Faculty
- 4:00 p.m. Wrap Up and Adjournment (Evaluations Online)
(Immediately followed by wine and cheese reception.)

FACULTY



Mary Koithan



Kathy Chappell

Lessons from Oz

Assuring Capabilities for Future Nursing Education & Practice



FULL AGENDA

Thursday, October 17, 2013

PRE-CONFERENCE II

Fostering Concept-Based Learning: Getting Started

Full-Day Session • 6.16 CH

The exponential increase in healthcare complexity has led to extreme content overload in nursing education. Many educators agree that a tipping point has been reached that demands a new educational approach. The concept-based curriculum offers a potential solution being adopted or considered by many schools of nursing. This workshop will address concept selection, faculty ownership, team based learning and clinical reasoning, as well as the challenges of curriculum revision, in the conversion to a concept-based curriculum. Presentations and demonstrations will address how to get started, and a panel will discuss the pearls and pitfalls learned when implementing a concept-based learning curriculum.

Objectives

At the conclusion of this educational session, participants will be able to:

- Discuss strategies to foster faculty ownership of curriculum change.
- Identify the processes and data sources that can be used when selecting concepts.
- Outline how team-based learning and an emphasis on clinical reasoning contributes to planning and implementing concept-based learning.
- Explore challenges in designing and implementing curriculum change.

Agenda for PRE-CONFERENCE II:

- 9:30 a.m. Registration and Sign-InCentury Foyer
- 10:00 a.m. Welcome & IntroductionsCentury Ballroom A
- 10:10 a.m. *Keynote Speaker: Why Concept-Based Learning*
Nelda Godfrey, PhD, RN, ACNS-BC, FAAN
- 11:20 a.m. Break
- 11:35 a.m. *Fostering Faculty Ownership of Curriculum Change*
Nelda Godfrey and **Sharon Kumm**, MN, MS, RN, CCRN
- 12:15 p.m. Lunch (box lunch provided)
- 1:00 p.m. *Selecting Concepts*
Lynelle N. B. Pierce, RN, MS, CCRN, CCNS, and **Delois Laverentz**, MN, RN, CCRN
- 2:15 p.m. Break
- 2:30 p.m. *Team-Based Learning*
Katherine A. Fletcher, PhD, RN, and **Chito Belchez**, MSN, RN
- 3:45 p.m. Break
- 4:00 p.m. *Panel: Challenges in Design and Implementation*
Patricia Sharpneck, DNP, RN, CNE, NEA-BC; **Lois Linden**, EdD, RN; and **Jessica Gay**, MSN, RNC
- 5:40 p.m. Q&A, Summary (completion of online evaluation)
- 6:00 p.m. Adjourn

FACULTY



Nelda Godfrey



Chito Belchez



Katherine A. Fletcher



Jessica Gay



Sharon Kumm



Delois Laverentz



Lois Linden



Lynelle N. B. Pierce



Patricia Sharpneck

Lessons from Oz

Assuring Capabilities for Future Nursing Education & Practice



FULL AGENDA

Thursday, October 17, 2013

PRE-CONFERENCE III

Liberating Structures Workshop

Full-Day Session • 6.25 CH

This workshop will introduce participants to a portfolio of interaction methods designed to engage staff in innovative problem solving around quality improvement and change initiatives. Liberating Structures include more than three dozen easy-to-learn, adaptable, open source methods that make it quick and simple for groups of people of any size to radically change how they interact and work together, and thus how they address issues, solve problems and develop opportunities. These methods have been used in health care organizations to engage staff in working on a wide range of problems such as reducing infection transmission, improving communication between staff in different roles, and making change initiatives work where adaptive change is needed.

Objectives

At the conclusion of this educational session, participants will be able to:

- Use 5-6 new “liberating structures” methods to engage colleagues in innovative problem solving.
- Discuss key elements that create the conditions for successful engagement and a vocabulary to help them communicate with staff and team members.
- Develop an action–plan for immediate application of new methods for an upcoming meeting for which they have responsibility.
- Use the step-by-step instructions from the reference workbook to introduce the methods experienced in the workshop along with many additional variations.

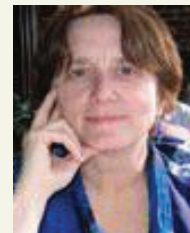
Agenda for PRE-CONFERENCE III:

- 8:00 a.m. Registration and Sign-InCentury Foyer
- 8:30 a.m. Welcome & IntroductionsRoanoke Room
- 8:45 a.m. *Opening Exercise: Introduction of Liberating Structures. Impromptu Speed Networking. 1-2-4-Whole group.*
- 9:45 a.m. *Barriers to Sustainable Change Technical ~ Adaptive Change (Q-Sorting)*
- 10:15 a.m. Break
- 10:30 a.m. *Engaging all roles and levels in innovating problem solving. (Discovery and action dialogues)*
- 11:30 a.m. Lunch (Chilled plated lunch provided, sponsored by the University of Kansas School of Nursing.)
- 12:30 p.m. *Designing robust change processes in healthcare. (TRIZ)*
- 1:15 p.m. *Engaging staff in capturing and making sense of what's happening in change efforts. (Data Pot Luck)*
- 2:00 p.m. Break
- 2:15 p.m. *Crowd-sourcing creative strategies for quality improvement. (25 will get you 10)*
- 2:45 p.m. *Developing individual action plan for next steps application of liberating structures back in your own organization. (Triad consulting. 15% solutions.)*
- 3:45 p.m. *After-Action Debrief & Conclusion. (What? So What? Now What?)*
- 4:30 p.m. Adjourn

FACULTY



Jeff Cohn



Lisa Kimball

Lessons from Oz

Page 16

Assuring Capabilities for Future Nursing Education & Practice



PNEG.info

FULL AGENDA

Thursday, October 17, 2013

PRE-CONFERENCE IV

TeamSTEPPS and Simulation

Half-Day Session • 3.16 CH

Simulation Lab, University of Kansas School of Nursing, Kansas City, Kan.

(Transportation provided to and from the Westin Kansas City at Crown Center hotel)

The purpose of this highly interactive program is to prepare the learner to implement selected TeamSTEPPS™ strategies that will improve communication and ultimately improve patient safety. After a brief introduction to the evidence base for TeamSTEPPS™ and Simulation, two techniques from TeamSTEPPS™—ISBAR and huddles—will be introduced for experiential simulations and debriefings to demonstrate evidence-based teaching strategies in a simulation lab. The differences in educational techniques for a simulation in a learning center versus in-situ practice will be discussed and active learning strategies will facilitate learner competency in the creation and implementation of simple ISBAR and simulation scenarios with effective debriefs.

TeamSTEPPS™ is an evidence-based set of teamwork tools aimed at optimizing patient outcomes by improving communication and teamwork skills among healthcare professionals. It includes a comprehensive set of ready-to-use materials and a training curriculum to successfully integrate teamwork principles into any healthcare system.

Hundreds of healthcare organizations across the country are integrating these tools into care delivery as part of a multi-pronged approach to achieve the Institute of Medicine's directives to improve patient safety. In turn, newly graduated healthcare professionals are entering healthcare environments that expect interprofessional communication and teamwork skills. This rapidly emerging change in practice challenges educators in all settings to use effective educational strategies that assure the integration of these new behaviors into practice. One such strategy being employed and tested is simulation and debriefing.

Objectives

At the conclusion of this educational session, participants will be able to:

- Discuss the use of TeamSTEPPS™ for promoting interprofessional communication and teamwork in healthcare delivery.
- Identify three barriers to integrating TeamSTEPPS™ in clinical practice and health profession curricula.
- Explain the value of combining simulation with instruction in TeamSTEPPS™ training.
- Describe the difference in techniques between simulations in a simulation center versus an in situ practice setting.
- Implement a simple, personally developed ISBAR simulation scenario and debrief.

Agenda for PRE-CONFERENCE IV:

- 12:30 p.m. Registration and Sign-In
University of Kansas School of Nursing Simulation Lab
- 1:00 p.m. Welcome & Introductions
- 1:10 p.m. *History and overview of:*
- the KU ICAP Peds HRSA Grant project
 - TeamSTEPPS, and
 - utilizing simulation with TeamSTEPPS
- 1:40 p.m. *TeamSTEPPS ISBAR Practice intervention demo/Simulation and TeamSTEPPS Simulation capture/recording-debriefing*
- TeamSTEPPS ISBAR Education intervention demo/Simulation and TeamSTEPPS Simulation capture/recording-debriefing*
- Participant Hands-on Practice of ISBAR including debrief*
- 2:50 p.m. Break
- 3:00 p.m. *TeamSTEPPS Huddle Education intervention demo/Simulation and TeamSTEPPS Simulation capture/recording-debriefing*
- TeamSTEPPS Huddle Practice intervention demo/Simulation and TeamSTEPPS Simulation capture recording-debriefing*
- Participant Hands-on Practice of Huddle including debrief*
- 4:00 p.m. Discussion and Evaluations (evaluations online)
- 4:30 p.m. Adjourn

FACULTY

**E. Laverne Manos****April Roche****Mary Meyer****Kristy Johnston**

Lessons from Oz

Assuring Capabilities for Future Nursing Education & Practice



FULL AGENDA Friday, October 18, 2013

The primary presenter for concurrent sessions is listed first.

- 7:00 a.m. Check-In, Continental Breakfast & ExhibitsCentury Foyer
- 8:30 a.m. Welcome & Speaker IntroductionCentury Ballroom A
- 8:45 a.m. Keynote Address: **Lessons From Oz on Wisdom and Resilience**.....Century Ballroom A
Elle Allison-Napolitano, PhD, Founder of WisdomOut, Danville, Calif.
- 9:45 a.m. Coffee Break with Exhibits.....Century Foyer

10:15 a.m.–11:15 a.m. Concurrent Sessions A

- A1: MentalHealthSim: Threading Psychiatric Simulations Throughout A BSN Curriculum**..... Roanoke Room
Michelle Beckford, DMH, MSN, RN, Assistant Professor of Nursing, Saint Peter’s University, Jersey City, N.J.; **Corinne Ellis**, DNP, RN, BC, Assistant Professor of Nursing, Saint Peter’s University, Jersey City, N.J.; **Margaret Macali**, PHCNS-BC, RN, Assistant Professor of Nursing, Saint Peter’s University, Jersey City, N.J.; **Sharyn Tondel**, DNP, NP-C, AHN, ONC, Director DNP Program, Saint Peter’s University, Englewood Cliffs, N.J.
- A2: The Scarecrow’s Journey—If I only had a brain! Using Competency-Based Learning to Implement a Nurse Residency** Century Ballroom A
Jean S. Shinnors, PhD, RN-BC, Director for Research, Versant Residencies, Hobe Sound, Fla.; **Cheryl Mallory**, BSN, RN-BC, Manager, Versant, St. Petersburg, Fla.
- A3: Evaluating Nursing Students’ Self-Efficacy in Writing Competency: Effects of a Structured Writing Intervention**Pershing East
Louise C. Miller, PhD, RN, Teaching Professor, University of Missouri Sinclair School of Nursing, Columbia, Mo.
- A4: Advancing Academic Progression in Nursing**..... Pershing West
Joan Libner, EdD, MSN, RN-BC, CNE, Associate Professor and RN to BSN Program Director, Benedictine University, Lisle, Ill.; **Alison C. Ridge**, DNP, MSN, RN, CNE, Assistant Professor and MSN Program Director, Benedictine University, Lisle, Ill.; **Elizabeth Ritt**, EdD, MSN, RN, NEA-BC, CNE, Chair and Professor, Nursing and Health, Benedictine University, Lisle, Ill.
- A5: Dedicated Education Units: Bridging the Theory-Practice Gap with Academic-Practice Collaborations**..... Pershing North
Patricia A. Sharpnack, DNP, RN, CNE, EA-BC, Associate Dean, Undergraduate BSN Programs and Associate Professor, Ursuline College, Pepper Pike, Ohio; **Bonnie J. Fellows**, MSN, Coordinator Accelerated BSN Program, Ursuline College, Pepper Pike, Ohio; **Perry R. Shockey**, MSN-Ed, BA, Nursing Instructor, Ursuline College, Pepper Pike, Ohio; **Nicole Ball**, BSN, RN, Clinical Instructor, Ursuline College, Pepper Pike, Ohio
- A6: Integration of Hospital Core Measures into Nursing Curricula**..... Pershing South
Karen D. Wiegman, PhD, RN, Department Chair, Graduate Studies in Nursing, MidAmerica Nazarene University, Olathe, Kan.
- A7: Using a Team Based Learning Approach in a Concept Based Course with Undergraduate Nursing Students**..... Shawnee Room
David L. Martin, MN, RN, Clinical Associate Professor and RN-BSN Program Director, University of Kansas School of Nursing, Kansas City, Kan.; **Chito A. Belchez**, MSN, RN-BC, Clinical Assistant Professor, University of Kansas School of Nursing, Kansas City, Kan.

11:15 a.m. Break

Lessons from Oz

Assuring Capabilities for Future Nursing Education & Practice



FULL AGENDA Friday, October 18, 2013

The primary presenter for concurrent sessions is listed first.

11:25 a.m.–12:25 p.m. Concurrent Sessions B

- B1:** *There's No Place Like Home: Improving Patient Transitions*..... Roanoke Room
Jenny B. Cronkhite, MSN, RN, MEd, Assistant Professor, State College of Florida, Bradenton, Fla.; **Marianne Adoryan**, MSN, MAEd, RN-BC, E-Solutions Implementation Consultant, Reed Elsevier, Bradenton, Fla.
- B2:** *If I Only Had a Brain...Heart...Courage: Leveraging Individual Competency and Team Competency through Polarity Thinking*..... Century Ballroom A
Laurie Levknecht, BSN, RN, Transformation Education Manager, Elsevier CPM Resource Center, Grand Rapids, Mich.
- B3:** *Perceptions of Teaching Effectiveness of Part-time and Full-time Clinical Nursing Faculty of BSN Education*..... Pershing East
Kimberly L. DeSantis, PhD, RN, Assistant Professor of Nursing, Indiana University East, Williamsburg, Ind.
- B4:** *Taming the Whirlwind of Change—The Meinersmann-Randall Transformed Model of Nursing Education*..... Pershing West
Krista M. Meinersmann, PhD, RN, Director, School of Nursing, University of Southern Maine, Portland, Me.; **Carla E. Randall**, PhD, RN, CNE, Associate Professor, School of Nursing, University of Southern Maine, Lewiston, Me.
- B5:** *“Follow the Yellow Brick Road” to Re-Energize Reflective Writing Assignments*..... Pershing North
Cassandra Ann Book, MA, Director of the Writing Center/Director of Parent Communication, Bellarmine University, Louisville, Ky.; **Elizabeth Moran Fitzgerald**, EdD, APRN, PMHCNS-BC, C-TEFL, Associate Professor, Lansing School of Nursing & Health Sciences, Bellarmine University, Louisville, Ky.
- B6:** *The Relationship Between Educational Podcasts, Preceptor Perception of Support, and Role Commitment*..... Pershing South
Cynthia A. Blum, PhD, RN, CNE, Assistant Professor, Florida Atlantic University, Boca Raton, Fla.
- B7:** *Incorporating Microsystem Leadership Concepts for Undergraduate Nursing Students*..... Shawnee Room
David L. Martin, MN, Clinical Associate Professor and RN-BSN Program Director, University of Kansas School of Nursing, Kansas City, Kan.; **Chito A. Belchez**, MSN, RN-BC, Clinical Assistant Professor, University of Kansas School of Nursing, Kansas City, Kan.

12:25 p.m. Lunch (on your own) with Exhibits

1:30–2:30 p.m. Concurrent Sessions C

- C1:** *Maximizing Student Learning and Retention In Online Classrooms: An Evidenced Based Approach* Pershing South
Margaret Reneau, PhD, MSN, Assistant Professor, Online Faculty Liaison, Saint Xavier University School of Nursing, Chicago, Ill.
- C2:** *Just Four Clicks of the Heel to a Baccalaureate Education*..... Pershing East
Mary C. Knowlton, DNP, RN, APN-BC, CNE, Associate Director of Undergraduate Programs, Western Carolina University, Cullowhee, N.C.; **Judy Neubrandner**, EdD, FNP-BC, Director and Professor, Western Carolina University, Waynesville, N.C.
- C3:** *Test Item Analysis: I have it; What do I do with it?*..... Roanoke Room
Carol J. Green, PhD, CNS, RN, CNE, Professor, Graceland University, Independence, Mo.
- C4:** *But Dorothy, We ARE in Kansas!: Transforming Nationwide Nursing Programs*..... Pershing West
Diann L. Martin, PhD, RN, National Director of Nursing, Concorde Career Colleges, Wilmette, Ill.

Lessons from Oz

Assuring Capabilities for Future Nursing Education & Practice



FULL AGENDA Friday, October 18, 2013

1:30–2:30 p.m. Concurrent Sessions C (continued)

C5: *Toto, I Have a Feeling we're not in Kansas Anymore! The Journey towards a Learner-Centered Learning Environment*..... Pershing North
Jennifer A. Bussen, MSN, RN, Assistant Professor, St. Charles Community College, St. Charles, Mo.

C6: *From Yellow Brick Road to Virtual Highway: Using Technology to Support New Staff*..... Century Ballroom A
Liz A. Boldon, MSN, RN, Nurse Education Specialist, Mayo Clinic, Rochester, Minn.; **Michele A. Hemann**, MSN, RN, Nursing Education Specialist, Mayo Clinic, Rochester, Minn.

C7: *"Delivering" OB Content in a Concept-Based Curriculum*..... Shawnee Room
Cara A. Busenhart, APRN, CNM, MSN, Program Director, Nurse-Midwifery Education, University of Kansas School of Nursing, Kansas City, Kan.; **April J. Roche**, MBA, CPEHR, Assistant Director, Clinical Learning Lab, University of Kansas School of Nursing, Kansas City, Kan.

2:30 p.m. Refreshment Break with Exhibits..... Century Foyer

2:50–3:50 p.m. Concurrent Sessions D

D1: *Infusing Nursing Theory and Evidence-based Practice into Baccalaureate Undergraduate Curriculum*..... Pershing South
Loretta Bond, PhD, RN, CNE, Assistant Professor of Nursing, Belmont University School of Nursing Nashville, Tenn.; **Lynne Shores**, PhD, RN, Professor, Adult Health Nursing, Belmont University School of Nursing, Nashville, Tenn.

D2: *Transforming Oz to Enhance Student Engagement and Success: Trading Traditional Academic Office Hours for Faculty-Led Collaborative Tutoring Sessions*..... Pershing East
Laurie J. Palmer, MS, RN, AOCN, Professor, Monroe Community College, Rochester, N.Y.; **Jacqueline Sayre Dorsey**, MS, RN, ANP, Assistant Professor, Monroe Community College, Rochester, N.Y.

D3: *Building the Yellow Brick Road: Utilization of Preceptor Best Practices*..... Pershing North
Sue Bugsch, MSN, RNC-NIC, Manager Education, Newborn and Infant Critical Care Unit, Children's Hospital Los Angeles, Palmdale, Calif.; **Cindy Rowlett**, BSN, RN, PHN, Education Manger, Pediatric Intensive Care Unit, Children's Hospital Los Angeles, Canyon Country, Calif.; **Jessica L. Klaristenfeld**, BSN, RN-BC, Residency Manager, Children's Hospital Los Angeles, Los Angeles, Calif.; **Frances Blayney**, MS, RN-BC, CCRN, Education Manager PICU, Children's Hospital Los Angeles, Los Angeles, Calif.

D4: *Challenges to Academic Success for Ethnoculturally Diverse Nursing Students*..... Pershing West
Elizabeth J. Diener, PhD, RN, CPNP, CNE, Chair, Graduate Programs and Associate Professor, Kramer School of Nursing, Oklahoma City University, Oklahoma City, Okla.

D5: *Engaging Clinical Faculty: Using QSEN to Connect Classroom and Clinical Learning*..... Century Ballroom A
Virginia "Ginny" Wangerin, MSN, PhD(c), RN, CNE, Nurse Educator and Consultant, NurseTim, Inc. and Upper Iowa University, Clive, Iowa

D6: *Returning to School as Experienced by Associate Degree Registered Nurses*..... Roanoke Room
Marie Mangin Adorno, PhD, APRN, C, Professor of Nursing, Our Lady of Holy Cross College, New Orleans, La.

Lessons from Oz

Assuring Capabilities for Future Nursing Education & Practice



FULL AGENDA Friday, October 18, 2013

3:50 p.m. Break

4:00–5:00 p.m. Concurrent Sessions E

E1: *Using Multimedia to Teach Communication Skills in Undergraduate Nursing Education* Pershing North
Louise C. Miller, PhD, RN, Teaching Professor, University of Missouri Sinclair School of Nursing, Columbia, Mo.

E2: *Interprofessional Education and TeamSTEPS™: Delivering on Our Commitment to Quality, Safety and Efficiency Across the Continuum of Care* Pershing East
Heather Vachelle Nelson, BSN, RN, CCRN, Affiliate Faculty, University of Kansas School of Nursing, Kansas City, Kan.; **Delois M. Laverentz**, MN, RN, CCRN, Clinical Instructor, University of Kansas School of Nursing, Kansas City, Kan.

E3: *Beyond the Emerald City: The Impact of Nursing Students' Evidence-Based Projects on Regional Practice* Pershing West
Marjorie C. Dobratz, DNSc, RN, Professor and Graduate Coordinator, University of Washington Tacoma, Tacoma, Wash.

E4: *Nurse Perceptions of Clinical Readiness in a Tiered Pediatric Critical Care Orientation Program* Roanoke Room
Kari L. Davidson, BSN, RN, CCRN, PICU Education Coordinator, Children's Mercy Hospital and Clinics, Kansas City, Mo.; **Marilyn J. Maddox**, MSN, CCRN, RN-BC, PICU Education Coordinator, Children's Mercy Hospital and Clinics, Kansas City, Mo.; **Kristen J. Mroczka**, BSN, RN, CCRN, PICU Education Coordinator, Children's Mercy Hospitals and Clinics, Kansas City, Mo.; **Trisha L. Williams**, BSN, RN, CPN, Clinical Research Coordinator, Children's Mercy Hospitals and Clinics, Kansas City, Mo.; **Sally A. Fagan**, BSN, RN, CCRN, PICU Education Coordinator, Children's Mercy Hospitals and Clinics, Kansas City, Mo.

E5: *A Servant Leadership Approach to Fostering Civility in Nursing Education* Century Ballroom A
Teresa J. Krassa, PhD, RN, CNE, Clinical Assistant Professor, University of Illinois at Chicago College of Nursing, Urbana, Ill.

E6: *Near Misses with Students in the Clinical Setting: Preparing Safe Workforce Participants* Pershing South
Rebecca L. Shabo, PhD, RN, PNP-BC, Associate Professor, WellStar School of Nursing, Kennesaw State University, White, Ga.; **Christie Emerson**, MSN, RN, FNP-BC, Senior Lecturer and Clinical Agency Liason, WellStar School of Nursing, Kennesaw State University, Kennesaw, Ga.

5:00 p.m. Adjourn

6:00 p.m. **Ruby Shoes Gala Reception and Poster Session**Century Ballrooms B & C

Lessons from Oz

Assuring Capabilities for Future Nursing Education & Practice



FULL AGENDA Saturday, October 19, 2013

The primary presenter for concurrent sessions is listed first.

7:00 a.m. Check-In, Continental Breakfast and ExhibitsCentury Foyer

8:00 a.m. Welcome & Speaker Introduction.....Century Ballroom A

8:30 a.m. *Plenary Speaker: **Creating Collaborative Care: The Oz Advantage***
Amy Blue, PhD, Associate Dean for Educational Affairs, University of Florida College of Public Health and Health Professions; Associate Vice President for Interprofessional Education, UF Health Office of the Senior Vice President for Health Affairs, Gainesville, Fla.
Dr. Blue will share lessons from the C3 initiative for making interprofessional education a reality.

9:15 a.m. Break

9:25 a.m.–10:25 a.m. Concurrent Sessions F

F1: *If I Only Had a Brain: Use of Brain Rules to Inform Educational Design & Technology*..... Pershing North
Nancy P. Davis, MSN, RN, CNOR, Product Manager, American Nurses Association Center for Continuing Education & Professional Development, Silver Spring, Md.; **Theresa A. Gaffney**, MPA, BSN, RN, Senior Director, American Nurses Association, Silver Spring, Md.

F2: *Preparing Nurse Leaders*..... Pershing East
Mary Rodgers Schubert, MPM, BSN, RN, Director Continuing Nursing Education, University of Pittsburgh School of Nursing, Pittsburgh, Pa.

F3: *Effects of High Stakes Testing and Remediation on Nursing School Success*..... Pershing West
Mary L. McHugh, PhD, MSN, RN, Professor of Nursing and Director, Nursing Graduate Programs, National University, Long Beach, Calif.

F4: *Support, Network, Inspire: Implementation of an Inter-Professional Residency Program*.....Century Ballroom A
Beth A. Hankamer, MSN, BS, RN, CAPA, Clinical Education Specialist, St. Louis Children’s Hospital, St. Louis, Mo.

F5: *Peer Coaching: Empowering the Next Generation of Nurses*..... Pershing South
Linda Smith McQuiston, PhD, RN, Assistant Professor, Indiana State University, Terre Haute, Ind.

F6: *Perceptions of Structural Empowerment in Student Nurses*..... Century Ballroom B
Shelley C. Moore, PhD, MSN, RN, Assistant, Middle Tennessee State University, Mt. Juliet, Tenn.

10:25 a.m. Coffee Break with Exhibits.....Century Foyer

10:45 a.m.–11:45 a.m. Concurrent Sessions G

G1: *Bringing Brains, Heart, and Courage to End-of-Life Care Using Simulation*..... Century Ballroom B
Chavonne M. Wyatt, MSN, APRN, Assistant Professor, Fort Hays State University, Hays, Kan.; **Carolyn S. Insley**, MN, MS, RN, Associate Professor, Fort Hays State University, Hays, Kan.

Lessons from Oz

Assuring Capabilities for Future Nursing Education & Practice



FULL AGENDA Saturday, October 19, 2013

10:45 a.m.–11:45 a.m. Concurrent Sessions G (continued)

- G2:** *Implementation of Crew Resource Management in the Veterans Health Administration*..... Pershing East
Gary L. Sculli, MSN, RN, ATP, Director, Clinical Team Training, Department of Veterans Affairs National Center for Patient Safety, Ann Arbor, Mich.; **Amanda M. Fore**, MS, RN, Nurse Coordinator and Program Analyst, Department of Veterans Affairs National Center for Patient Safety, Ann Arbor, Mich.
- G3:** *Not in Kansas Anymore—An Innovative Approach to Traditional Evaluation Methods*..... Century Ballroom A
Lea A. Wood, MS(N), RN, Coordinator of the Essig Clinical Simulation Learning Center, University of Missouri Sinclair School of Nursing, Columbia, Mo.
- G4:** *Incorporating IOM Core Competencies for Interprofessional Collaborative Practice into Interdisciplinary Hospital Orientation*..... Pershing South
Barb Hensley, MSN, RN-BC, Education Consultant, Cincinnati Children’s Hospital, Cincinnati, Ohio
- G5:** *Back to the Future: Using Low Tech Strategies to Re-Connect with Today’s Students*..... Pershing West
Joan M. Davenport, PhD, RN, Assistant Professor and Vice-Chair, Department of Organizational Systems and Adult Health, University of Maryland School of Nursing, Baltimore, Md.; **Susan L. Bindon**, DNP, RN-BC, Assistant Professor, University of Maryland School of Nursing, Baltimore, Md.
- G6:** *Nursing CSI Experience: Implementing an Innovative Methodology to Discuss Nurse Sensitive Indicators and Validate Skills*.... Pershing North
Claudia Pagani, MSN, RN-BC, Nursing Education Specialist, Robert Wood Johnson University Hospital, New Brunswick, N.J.; **Nicole Rolston**, MSN, RN, Nursing Education Specialist, Robert Wood Johnson University Hospital, New Brunswick, N.J.

11:45 a.m. **Professional Nursing Educators Group (PNEG) Business Meeting** Benton’s Prime (rooftop)
Everyone is encouraged to attend!
In order to maximize the time devoted to educational sessions, the PNEG Annual Meeting will be held over the noon hour. *If you would like to reserve a box lunch for \$15, the conference organizers will subsidize the remaining cost of the lunch. Be sure to indicate this on the registration form.*

1:00 p.m.–2:00 p.m. Concurrent Sessions H

- H1:** *It Takes Brains, Heart, and Courage: Using Nursing Peer Review to Foster Professional Practice and Accountability in a Rural Community Hospital*..... Pershing East
Susan L. LaPlante, BSN, RN-BC, Clinical Educator and Staff Development Specialist, Phelps County Regional Medical Center, Rolla, Mo.
- H2:** *Take ACTION: A Collaborative Approach to Creating a Culture of Safety*..... Century Ballroom A
Heidi Boehm, MSN, RN-BC, Unit Educator, The University of Kansas Hospital, Olathe, Kan.; **Steven P. Keller**, BSN, RN, Unit Educator, Operating Room, University of Kansas Hospital, Kansas City, Kan.; **Joann L. Moore**, RPh, Medication Safety Coordinator, The University of Kansas Hospital, Kansas City, Kan.
- H3:** *A Grounded Theory Study of Clinical Judgment in Nursing*..... Pershing South
Betsy Wilber, PhD(c), RN, Assistant Professor of Nursing, Lewis University College of Nursing and Health Professions, Loyola University Chicago, Elmhurst, Ill.

Lessons from Oz

Assuring Capabilities for Future Nursing Education & Practice



FULL AGENDA Saturday, October 19, 2013

1:00 p.m.–2:00 p.m. Concurrent Sessions H (continued)

H4: *A Unique Education Partnership to Increase BSN Nurses*..... Pershing North

Sally A. Doshier, EdD, RN, CNE, Assistant Dean and Associate Professor, Northern Arizona University School of Nursing, Flagstaff, Ariz.; **Susan E. Mayer**, EdD, MSN, RN, Director, Maricopa Nursing at Glendale Community College, Phoenix, Ariz.; **Marty Mayhew**, RN, MSN, Dean, Nursing and Health Related Professions, Pima Community College, Tucson, Ariz.; **Shirley A. Rees-McGee**, PhD, MSN, RN, Assistant Clinical Professor, Northern Arizona University; Maricopa Concurrent Enrollment Nursing Coordinator, Phoenix, Ariz.

H5: *Transmitting the Contagion of Joy: The Role of the Exemplary Leader in the 21st Century Healthcare World*..... Pershing West

Leigh Ann Bradley, PhD, FNP, RN, LPC, Patient Experience Coach, Baptist Leadership Group, Santa Barbara, Calif.

H6: *Transgender 101: A Primer for Nurse Educators*..... Century Ballroom B

Paula M. Neira, JD, BSN, RN, CEN, Nurse Educator, Department of Emergency Medicine, The Johns Hopkins Hospital, Baltimore, Md.

2:00 p.m. Break

2:10 p.m.–3:10 p.m. Concurrent Sessions I

I1: *Increasing Nursing Student Engagement* Pershing South

Immaculata Ngozi Igbo, PhD, MS, Associate Professor, Prairie View A&M University College of Nursing, Houston, Tex.; **Margie J. Landson**, MSN, CNE, Clinical Assistant Professor, Prairie View A&M University, Houston, Tex.; **Kathleen C. Straker**, MEd, Academic Advisor, Prairie View A&M University, Cypress, Tex.

I2: *Information Literacy for Lifelong Learning: Teaching Them to Fish Instead of Feeding Them*..... Century Ballroom B

Lorraine P. Buchanan, MSN, RN, Clinical Instructor, KU School of Nursing, Kansas City, Mo.; **Heather Collins**, MLS, Biomedical Librarian, A.R. Dykes Library; School of Nursing Liaison, University of Kansas Medical Center, Kansas City, Kan.; **Sharon Kumm**, MN, MS, CCRN, Clinical Associate Professor, University of Kansas, Kansas City, Kan.; **Karen Tarnow**, PhD, RN, Clinical Associate Professor, University of Kansas School of Nursing, Kansas City, Kan.

I3: *Where do you Want to be Oiled First? Mentoring Lessons from Oz*..... Pershing East

Jeanne M. Sorrell, PhD, RN, FAAN, Senior Nurse Scientist, Cleveland Clinic, Cleveland Heights, Ohio; **Pamela R. Cangelosi**, PhD, RN, CNE, Associate Dean for Academics, Shenandoah University, Leesburg, Va.

I4: *Increasing the Diversity of the Nurse Workforce* Pershing West

Mary Powell, PhD, RN, CRNP, CDE, Associate Professor and Director, Graduate Nursing Programs, Neumann University, Aston, Pa.; **Julia Anne Walsh**, MSN, RN, Adjunct Professor, Nursing Workforce Diversity Project C-Results, Neumann University, Aston, Pa.

I5: *Paving the Road to Postconference with QSEN* Pershing North

Heather M. Kendall, MSN, CCRN-CMC-CSC, Assistant Professor, Missouri Western State University St. Joseph, Mo.

I6: *A Dedicated Education Unit for 21st Century Nursing Practice*..... Century Ballroom A

Martha M. Scheckel, PhD, RN, Associate Professor and Director, Undergraduate Programs, Michigan State University College of Nursing, East Lansing, Mich.; **Carol A. Dwyer**, MSN, MM, RN, Vice President, Nursing, Sparrow Health System, Lansing, Mich.

Lessons from Oz

Assuring Capabilities for Future Nursing Education & Practice



FULL AGENDA Saturday, October 19, 2013

- 3:10 p.m. Refreshment Break with Exhibits.....Century Foyer
- 3:30 p.m. Speaker IntroductionCentury Ballroom A
- 3:35 p.m. *Plenary Speaker: QSEN, HITECH, EMRS, Meaningful Use and the Learning Health System of the Future*
Judith J. Warren, PhD, RN, BC, FAAN, FACMI
A glimpse of the informatics competencies required of the future nurse.
- 4:35 p.m. Invitation to the 2014 41st Annual National Conference on Professional Nursing Education and Development
- 4:45 p.m. Adjourn
- 6:00 p.m. Social Event (Optional)—“**Savor Kansas City**”
Separate fee required.

“Savor Kansas City” Social Event Information

“Savor KC” is an evening filled with great food, drink, Kansas City architecture, and fun! Saturday evening starts with the savory creations of local caterers, “Scrape the Plate” and delectable wines from the Cellar Rat. Next, we will be boarding a tour bus that will take us through areas of interest, historical sites, beautiful architecture and fountains in Kansas City. Sights include—but are not limited to—the World War I Monument, Union Station, Kauffman Performing Arts Center, the Plaza, Ward Parkway homes, the Sprint Center, the Power and Light District, and the Nelson Art Museum. During the tour we will make several stops. The first stop will be at Grand Street Café, a Kansas City favorite on the Country Club Plaza (www.grandstreetcafe.com). A variety of wonderful appetizers will be served. Any additional purchases are on your own. After Grand Street, choose Option 1 or 2.

Option 1: Take a walking tour of the Country Club plaza.

Option 2: Visit Glace, a wonderful new artisan ice cream shop opened by Christopher Elbow, a local chocolatier. A must for ice cream connoisseurs. Any purchases are on your own. (www.glaceicecream.com)

Lessons from Oz

Assuring Capabilities for Future Nursing Education & Practice



FULL AGENDA Sunday, October 20, 2013

- 7:00 a.m. Check-InCentury Foyer
- 7:30 a.m. Breakfast Round TablesCentury Ballroom A
- 8:30 a.m. Break

8:40 a.m.–9:40 a.m. Concurrent Sessions J

- J1:** *Lights.....Action.....Camera.....: Integrating Online Videos in a Large Course Redesign.....* Pershing East
Gina M. Oliver, PhD, APRN, FNP-BC, CNE, Assistant Teaching Professor, University of Missouri Sinclair School of Nursing, Columbia, Mo.
- J2:** *Clinical Informatics Agents (CIAs): Engaged Bedside Clinicians Promoting Best Practices and Increased End User Communication ...* Pershing North
Elizabeth Marie Weeks, BSN, RN, CMSRN, Nursing Informatics Specialist, The University of Kansas Hospital, Kansas City, Kan.;
Dawn R. Walters, MBA, BSN, RN, Director, Clinical Informatics, The University of Kansas Hospital, Kansas City, Kan.
- J3:** *Project CHECK: A Service Learning Project to Promote Cholesterol Health Education in Fifth Graders.....* Century Ballroom B
Suzanne White, MSN, BSN, PHCNS-BC, Assistant Professor of Nursing, Morehead State University, Morehead, Ky.
- J4:** *Tailoring a Systems Learning Curriculum for New Clinicians.....* Century Ballroom A
Jill L. Vickers, MSN, RN, CPN, Manager, Clinical Informatics, Children’s Mercy Hospitals and Clinics, Kansas City, Mo.; **Molly C. Boyd**, BSN, RN, Manager, Clinical Informatics, Children’s Mercy Hospitals and Clinics, Kansas City, Mo.; **Jamie L. Douglas**, BSN, RN, CPN, Manager, Clinical Informatics, Children’s Mercy Hospitals and Clinics, Kansas City, Mo.
- J5:** *“I Am Going to Call my Attorney”.....* Pershing South
Patricia Recek, MSN, RN, Assistant Dean Health Sciences, Austin Community College, Austin, Tex.; **Eileen M. Klein**, MSN, EdD, RN, Executive Dean Health Sciences, Austin Community College, Austin, Tex.
- J6:** *Barriers to Nurses Returning to School.....* Pershing West
Tiffany M. Boyd, MSN, RN, Staff Development Instructor, PinnacleHealth Hospitals, Harrisburg, Pa.

9:40 a.m. Break

9:50 a.m.–10:50 a.m. Concurrent Sessions K

- K1:** *Student-Faculty Email Exchanges in a Distance-Mediated, Multi-Modal, Multi-Disciplinary Course: Opportunity for Course Assessment and Re-Design.....* Pershing West
Tamara Gail Coon Sells, PhD, Adjunct Instructor, Research Specialist, University of Missouri Sinclair School of Nursing, Columbia, Mo.; **Jane M. Armer**, PhD, RN, FAAN, Professor, University of Missouri Sinclair School of Nursing, Columbia, Mo.; **Donna Russell**, PhD, Academic Technology Liaison, University of Missouri Sinclair School of Nursing, Columbia, Mo.
- K2:** *Using Clinical Examples in Continuing Education to Evaluate Learning and Document Transfer of Learning to Nursing Practice.....* Pershing East
Martha B. DuHamel, MPH, Assistant Dean for Continuing Nursing Education, University of Washington School of Nursing, Seattle, Wash.

Lessons from Oz

Assuring Capabilities for Future Nursing Education & Practice



FULL AGENDA Sunday, October 20, 2013

9:50 a.m.–10:50 a.m. Concurrent Sessions K (continued)

K3: Strategies for Building Advocacy Skills among Undergraduate and Graduate Students..... Century Ballroom B
Jill N. Peltzer, PhD, RN, APRN-CNS, Clinical Assistant Professor, University of Kansas School of Nursing, Kansas City, Kan.; **Elaine M. Frank-Ragan**, PhD, RN, Associate Clinical Professor and Director, Cultural Enrichment Program, University of Kansas School of Nursing, Kansas City, Kan.; **Cynthia S. Teel**, PhD, RN, FAAN, Professor and Associate Dean, Graduate Programs, University of Kansas School of Nursing, Kansas City, Kan.

K4: Nursing Faculty Navigator: A Guide for New Faculty.....Century Ballroom A
Elizabeth I. Hagell, MEd, BN, RN, Instructor, Red Deer College, Red Deer, Alberta, Canada

K5: Novice Nurses: You Hired Them But Can You Keep Them?..... Pershing North
Stacy E. Wahl, PhD, RN, CCRN, Critical Care Educator, North Shore University Hospital; Academic Faculty, Walden University, Huntington Station, N.Y.

K6: Moral Accountability: An Exploration of Student Nurses' Attitudes Toward Advance Directives and End-of-Life Care Decisions.....Pershing South
Eileen M. Watson, EdD, RN, ANP, GNP, LNCC, Associate Professor of Nursing, California State University, Long Beach, Calif.

10:50 a.m. Break

11:00 a.m. Closing Remarks and Speaker IntroductionCentury Ballroom A

11:10 a.m. *Plenary Speaker: Why Normal Isn't Healthy*.....Century Ballroom A
Bowen White, PhD, Stress Technologies, Overland Park, Kan.
 Dr. Bowen will use humor to give nurse leaders a lens to see options for using change as an opportunity for their own growth and well-being and then to lead by example.

12:10 p.m. Adjourn

Lessons from Oz

Page 27

Assuring Capabilities for Future Nursing Education & Practice



PNEG.info

POSTERS

In alpha order by last name of primary author

Posters will be updated through the event date. Check pneg.info for updates.

Technology Mediated Teaching Strategies in Nursing Education for Veterans Care

Barbara H. Baker, PhD, RN, Assistant Professor, University of Central Missouri, Warrensburg, Mo.; **Julie A. Clawson**, PhD, MN, MS, RN, Chair & Professor of Nursing, University of Central Missouri, Warrensburg, Mo.

A Journey Toward Advocacy

Julie Baldwin, MSN, RN-BC, CNE, Associate Professor, Missouri Western State University, St. Joseph, Mo.; **Cristi Campbell**, DNP, RN, Associate Professor, Missouri Western State University, St. Joseph, Mo.; **Deborah Ellis**, MSN, FNP, Associate Professor, Missouri Western State University, St. Joseph, Mo.; **Machelle H. Skinner**, MSN, RN, CEN, Assistant Professor, Missouri Western State University, St. Joseph, Mo.

A Lesson from Dorothy and her Friends: The Value of the Collaborative Testing Journey

Paula Kerler Baumann, PhD, MBA, RN, CNE, Assistant Professor, Indiana University East School of Nursing, Richmond, Ind.

Sustaining Competent Nursing Practitioners with Clinical Decision Support to Prevent Hospital Acquired Conditions

Lacey D. Bergerhofer, BSN, RN, Manager, Clinical Informatics, Children's Mercy Hospitals & Clinics, Kansas City, Mo.; **Janis B. Smith**, DNP, RN, Director, Clinical Informatics & Professional Practice, Children's Mercy Hospitals & Clinics, Kansas City, Mo.

Simulation for Novice BSN Students: Adventures on the Road to Competency Validation

Carol J. Bett, PhD(c), RN, Faculty, Wichita State University, Langdon, Kan.; **Theresa A. Cooper**, MSN/MBA, RN, Clinical Educator, Wichita State University, Wichita, Kan.

Evidence Based Teaching: A Link to Student Engagement

Susan L. Bindon, DNP, RN-BC, Assistant Professor, University of Maryland School of Nursing, Baltimore, Md.

The Gold Standard: Bedside Champions for Better Health

Heidi F. Boehm, MSN, RN-BC, Unit Educator, Orthopedics, The University of Kansas Hospital Kansas City, Kan.; **Naomi King**, MS, RN-BC, Education Specialist, The University of Kansas Hospital, Kansas City, Kan.

The Effect of a Breastfeeding Education Program on Nurse Knowledge and Attitude toward Breastfeeding and Patient Satisfaction

Janine R. Brammeier, MSN, RNC-OB, C-EFM, CLC, OB Nurse Clinician, Belleville Memorial Hospital, Belleville, Ill.

Theory-Guided Evidence-Based Education Framework: Strategies for Success

Diane M. Breckenridge, PhD, RN, ANEF, Director, Nursing Workforce, Strategies for Success Program and Associate Professor, La Salle University School of Nursing and Health Sciences, Flourtown, Pa.

Leadership Aspirations of Registered Nurses: Who Wants to Follow Us?

Jean Bulmer, DNP, RN-BC, Director, Organizational Development & Training, UPMC Hamot, Erie, Pa.

Developing Student Leaders in Quality Improvement Fusing Infection Control and Academia

Paula J. Byrne, MSN, RN, Chair, Traditional Nursing Department, The College of St. Scholastica, Duluth, Minn.

On the Yellow Brick Road: RN-to-BSN Education for Oklahoma's Rural Nurses

Dia D. Campbell-Detrixhe, PhD, RN, FNGNA, CNE, Assistant Professor of Nursing, Oklahoma City University Kramer School of Nursing, Oklahoma City, Okla.; **Denise L. Burton**, MS, RNC, Associate Professor of Nursing, Oklahoma City University Kramer School of Nursing, Oklahoma City, Okla.; **Betty J. Gorrell**, EdD, RN, Associate Professor of Nursing, Oklahoma City University Kramer School of Nursing, Oklahoma City, Okla.

Lessons from Oz

Assuring Capabilities for Future Nursing Education & Practice



Page 28

PNEG.info

POSTERS

Using Transformative Learning to Develop Critical Thinking and Transform Practice in Student Nurses

Susan Carroll, MS, RN-BC, Education Quality Coordinator, Rush University College of Nursing/Rush Oak Park Hospital, Oak Park, Ill.

Experiences of Graduate Nurses Enrolled in a Nurse Residency Program

Susan Kasal Chrisman, PhD, MSN, RN, Coordinator of Institutional Effectiveness, Professor, Research College of Nursing, Kansas City, Mo.; **Julia L. Payne**, BSN, RNC-OB, Nurse Educator, Research Medical Center, Kansas, Mo.

Herding Cats: Leading a Successful Curriculum Revision in Six Months

Mark C. Crider, PhD, MSN, RN, Assistant Professor and Chair of Undergraduate Programs, Duquesne University School of Nursing, Pittsburgh, Pa.

Equipping Professional Nurses for the Future: A Comprehensive Framework For Educating Professional Nurses

Nancy Crigger, PhD, MA, FNP-BC, Associate Professor, Graceland University, Independence, Mo.; **Nelda Godfrey**, PhD, ACNS-BC, FAAN, Associate Dean, Undergraduate Programs, University of Kansas School of Nursing, Kansas City, Kan.

Lessons from SON's: Magical Possibilities in Curricular Revision

Ronda S. Cushman, MS, RN, Assistant Professor, SUNY Alfred State, Alfred, N.Y.; **Cindy L. Coleman**, MS, FNP-C, Assistant Professor, SUNY Alfred State, Almond, N.Y.

Nursing Student Clinical Immersion Experience in Northern Uganda: Does the Experience Make Students More Culturally Competent?

Lana K Davies, MSN, RN, CPNP, Assistant Professor, Research College of Nursing, Lee's Summit, Mo.; **Rebecca Saxton**, PhD, RN, CNE, Associate Professor, Research College of Nursing, Kansas City, Mo.

How Do You Know What Your Nurses Know? Use of the BKAT for Nursing Education Assessment

Shannon M. Davis, MSN-Ed, BS, PCCN, RN/Clinical Educator, Scottsdale Healthcare, Scottsdale, Ariz.

New Graduate Nurse On-Boarding Program

Shannon M. Davis, MSN-Ed, BS, PCCN, RN/Clinical Educator, Scottsdale Healthcare, Scottsdale, Ariz.; **Kamela Bjoin**, MSN, BSN, RN, Nurse Manager, Scottsdale Healthcare, Scottsdale, Ariz.

Collaborating to Improve Nurse Competency Assessment

Kathleen M. Dougherty, MSN, RN, Manager, Professional Practice and Leadership Development, BJC Healthcare, St. Charles, Mo.

The Integration of Simulation into Nursing Curricula

Melissa D. Duprey, EdD, MSN, RN, Assistant Professor of Nursing, Oklahoma City University, Kramer School of Nursing, Mustang, Okla.

Maximizing Resources for Nurse Practitioner Education: Utilizing a Statewide Nurse Practitioner Educational Collaborative

Diane Whitaker Ebbert, PhD, APRN, FNP-BC, Assistant Professor, Director, Advanced Practice Programs, University of Kansas School of Nursing, Tonganoxie, Kan.; **Moya C. Peterson**, PhD, RN, FNP-C, Assistant Professor, Schools of Nursing and Medicine, University of Kansas Medical Center, Kansas City, Kan.

Rethinking the Literature Review in the Digital Age: Interprofessional Collaboration through Lib Guides

Diane Whitaker Ebbert, PhD, APRN, FNP-BC, Assistant Professor, Director, Advanced Practic Programs, University of Kansas School of Nursing, Kansas City, Kan.; **Heather Collins**, MLS, Biomedical Librarian - School of Nursing Library Liaison, University of Kansas Medical Center- A.R. Dykes Library, Kansas City, Kan.; **Moya C. Peterson**, PhD, APRN, FNP-C, Assistant Professor, Schools of Nursing and Medicine, University of Kansas Medical Center, Kansas City, Kan.

Lessons from Oz

Assuring Capabilities for Future Nursing Education & Practice



Page 29

PNEG.info

POSTERS

Create Your Own Yellow Brick Road – Creating and Sustaining a Critical Care Nurse Residency Program

Julia Garrison Eberwine, MSN, RN, CCRN, PCCN-CMC, Clinical Educator, The Christ Hospital, Mason, Ohio

Lions & Tigers & Bears Oh My! Competencies versus Skills: Do You Know The Difference?

Julia Garrison Eberwine, MSN, CCRN, PCCN-CMC, Clinical Educator, The Christ Hospital, Mason, Ohio

Support Group Intervention for English Second Language Students

Betty L. Elder, PhD, RN, Associate Professor, Wichita State University, Wichita, Kan.; **Yvonne J. Fast**, MSN, APRN, Lecturer, Wichita State University, Wichita, Kan.; **Phyllis M. Jacobs**, MSN, RN, Assistant Professor and Clinical Coordinator, Wichita State University, Wichita, Kan.

High Fidelity Simulation in a Fundamentals Course Using Unfolding Scenarios

Michelle L. Finch, MSN, RN, CPN, Assistant Professor, Middle Tennessee State University, Murfreesboro, Tenn.; **Shelley Moore**, PhD, MSN, RN, Assistant Professor, Middle Tennessee State University, Murfreesboro, Tenn.

Innovative Solution to Resolve Lateral Violence in Nursing and Nursing Education

Michelle L. Finch, MSN, RN, CPN, Assistant Professor, Middle Tennessee State University, Murfreesboro, Tenn.

Interprofessional Collaborative Online Learning Classroom Pilot

Lisa M. Fink Ogawa, PhD, RN, CNE, Assistant Clinical Professor, The University of Kansas School of Nursing, Kansas City, Kan.

Developing Future Patient Advocates: Strategies for Teaching and Mentoring Nursing Students

Elizabeth Moran Fitzgerald, EdD, APRN, PMHCNS-BC, C-TEFL, Associate Professor, Lansing School of Nursing & Health Sciences, Bellarmine University, Louisville, Ky.; **Gracie Wishnia**, PhD, MSN, RN, BC, Associate Professor, Spalding University, Louisville, Ky.

Down the Yellow Brick Road: A Competency Assessment Journey

Michele M. Fix, MSN, RN, NE-BC, Clinical Practice Manager, Children's Mercy Hospital, Kansas City, Mo.; **N. Ellen Kisling**, MSN, RN, Director of Education, Children's Mercy Hospital, Kansas City, Mo.

There's No Place Like Home: Improving Patient Transitions

Carolyn D. Flint, MSN, RN-BC, Senior Education Specialist, Phelps County Regional Medical Center, Rolla, Mo.; **Susan L. LaPlante**, BSN, RN-BC, Staff Development Specialist, Phelps County Regional Medical Center, Rolla, Mo.

ACES Goes to OZ: Dorothy's Newest Friends

Susan Gross Forneris, PhD, RN, CNE, CHSE, Associate Professor, St. Catherine University, St. Paul, MN; NLN Scholar-in-Residence, St. Paul, Minn.

Systematic Assessment of Evidence-Based Practice for Graduate Students

Diane McNally Forsyth, PhD, RN, Professor, Winona State University, Rochester, Minn.

Giant Concept Mapping: Drawing Students into Physical Assessment

Kami L. Fox, MS, CNP, Pediatric Nurse Practitioner/Assistant Professor of Nursing, Ohio Northern University, New Knoxville, Ohio

Violence at the Bedside

Sarah E. Gabua, MSN, RN, Assistant Professor of Nursing, Rockford College, Rockford, Ill.

Creating a Culture of Safety through Meta-Cognition

Charlie Garland, MBA, BSE, President, The Innovation Outlet/Healthcare Division, New York, N.Y.

Lessons from Oz

Assuring Capabilities for Future Nursing Education & Practice



Page 30

PNEG.info

POSTERS

Development of an Evaluation Tool for Hybrid Pre-Licensure Nursing Clinical Courses

Michele A. Gerdes, BSN, RN, Graduate Student, Research College of Nursing, Kansas City, Mo.

Promoting Postgraduate Nursing Student Gains in Academic Literacy Skills for Clinical Leadership

Paul J. Glew, EdD, MN, RN, School of Nursing and Midwifery, Senior Lecturer/Dr., University of Western Sydney, Australia
Penrith South DC, New South Wales

Academic Transition Issues: Associate Degree to Baccalaureate Degree Nursing

Karen L. Gorton, PhD, MS, RN, Assistant Professor, Assistant Director, Undergraduate Programs, University of Northern Colorado, Greeley, Colo.

The Path to a Centralized and Decentralized Nursing Competency Model in Practice

Celeste Gray, MSN, RN, Director of Women and Children & Education, HaysMed, Hays, Kan.

A Series of Interprofessional Learning Experiences in Step with IPEC Competencies

Gretchen Gregory, MSN, RN, Director of the Essig Clinical Simulation Learning Center, University of Missouri Sinclair School of Nursing, Columbia, Mo.

Employer's Need for Speed—Accelerating Graduate Nurse Time to Independent Practices

Anne M. Hackman, MPA, BSN, RN, NE-BC, Coordinator, Nursing Outcomes & Professional Development, University of Missouri Health Care, Columbia, Mo.

Nurses' Emotions and Standards of Conduct - Their Association with the Historical Background of Nursing

Mihoko Harada, Master, Lecturer, Nursing Education, Awaji, Hyogo; **Makiko Tanaka**, Professor, Yamaguchi Prefectural University, Sakurabatake

Electronic Portfolios: The Yellow Brick Road to Emerald City and Beyond

Crystal R. Harris, PhD, RN, Associate Professor, Missouri Western State University, St. Joseph, Mo.

Who Will Succeed? A Multipronged Approach in Improving Nursing Student Success

Robin C. Harris, DNP, RN, Assistant Teaching Professor, University of Missouri Sinclair School of Nursing, Columbia, Mo.

"Tin Man, you don't have to travel to OZ to find the heart in nursing!": Developing a High-Impact Spirituality in Nursing Course for a BSN Curriculum

Ann N. Hellman, MSN, RN, Assistant Professor, Tennessee Technological University Whitson-Hester School of Nursing, Cookeville, Tenn.

Unlicensed Assistive Personnel Orientation to Enhance Safe Patient Care

Barb Hensley, MSN, RN-BC, Education Consultant, Cincinnati Children's Hospital, Cincinnati, Ohio

Educating Staff on Electronic Medical Record Documentation Using a Blended Learning Approach

Barb Hensley, MSN, RN-BC, Education Consultant, Cincinnati Children's Hospital, Cincinnati, Ohio

Challenges of Course Redesign for Entry Level BSN Safety and Quality Curriculum

Amy L. Hite, DNP, APRN, FNP-C, Assistant Professor, Pittsburg State University, Pittsburg, Kan.; **Kristi L. Frisbee**, DNP, RN, Instructor, Pittsburg State University, Pittsburg, Kan.

Utilizing Simulation Scenarios in a Family Nurse Practitioner Curriculum to Improve Advanced Health Assessment Skills

Amy L. Hite, DNP, APRN, FNP-C, Assistant Professor, Pittsburg State University, Pittsburg, Kan.; **Cheryl K. Giefer**, PhD, APRN, FNP-BC, Professor, Pittsburg State University, Pittsburg, Kan.; **Jennifer J. Harris**, MSN, FNP-C, Instructor, Pittsburg State University, Pittsburg, Kan.; **Karen A. Johnson**, APRN, FNP-C, CNE, Nursing Instructor, Pittsburg State University, Frontenac, Kan.

Lessons from Oz

Assuring Capabilities for Future Nursing Education & Practice



Page 31

PNEG.info

POSTERS

Development and Evaluation of Objective Structured Clinical Examination (OSCE) For New Nurses In A Medical Center In Southern Taiwan

Su-Ya Huang, BHA, Registered Nurse, Chi Mei Medical Center, Taiwan

Evidence-Based Teaching Practice: The Means to Transform Nursing Education

Lina A.F. Kantar, EdD, MSN, RN, Assistant Professor, American University of Beirut

Dorothy...Click Those Shoes...and Off We Go Down the Yellow Brick Road to The Reality of Health Care. Using Multi-facet Simulations to Prepare the Graduates for the Real World

Sheila M. Keller, MSN, RN, Clinical Simulation Coordinator, Neumann University, Sicklerville, N.J.

Come Join Dorothy, the Cowardly Lion, the Tin Man, and the Straw Man to Join in as Partners in Achieving Student Success. Easing the Beginning Nursing Student into Critical Thinking

Sheila M. Keller, MSN, RN, Clinical Simulation Coordinator, Neumann University, Sicklerville, N.J.

Use Your Brain to Define Competence

Heather M. Kendall, MSN, CCRN-CMC- CSC, Assistant Professor, Missouri Western State University, St. Joseph, Mo.

Ed Dev on the Spot: Bringing Education to the Frontlines

Naomi King, MS, RN-BC, Education Specialist, The University of Kansas Hospital, Kansas City, Kan.

Changing from One Electronic Health Record to Another; How Not to be Afraid of Lions, Tigers and Bears (Oh My!)

Robert C. Knies, MSN, RN, NEA-BC, Sr. Consultant, Encore Health Resources, Louisville, Ky.; **Natalie Blee**, MBA, BSN, RN, CEN, Management Consultant, Dell Services, Vale, N.C.

"Engaging New Graduate RN's in an Evidence-based Healthcare Project"

Mary Jo Koschel, MSN, RN-BC, CFRN, Education Nurse Specialist, Poudre Valley Hospital, University of Colorado Health System, Fort Collins, Colo.

Implementing E-Books in an Undergraduate Nursing Program

Sharon K. Kumm, MN, MS, CCRN, Clinical Associate Professor, University of Kansas School of Nursing, Kansas City, Kan.; **Karen Tarnow**, PhD, RN, Clinical Associate Professor, University of Kansas School of Nursing, Kansas City, Kan.

Driving a Makeover: Changing Direction for Continuing Professional Development

Renee Kumpula, EdD, RN, PHN, Director of Continuing Professional Development, University of Minnesota School of Nursing, Minneapolis, Minn.

Lessons in RESPECT: Creating a Healthy Culture for Learning

Delois M. Laverentz, MN, RN, CCRN, Clinical Instructor, University of Kansas School of Nursing, Kansas City, Kan.; **Cara A. Busenhart**, MSN, APRN, CNM, Program Director, Nurse-Midwifery Education, University of Kansas School of Nursing, Kansas City, Kan.; **Edward Wilson**, MS, Director of Academic and Student Affairs, University of Kansas School of Nursing, Kansas City, Kan.

Cultural Diversity and Health Care: Are We Providing Culturally Competent Care?

Marjorie H. Lehigh, MHed, MHA, BSN, RN, CHES, Nurse Manager, Penn Presbyterian Medical Center, UPHS Health System, Philadelphia, Pa.

The Wiki Witch of the West

Cheryl A. Leiningen, DNP, APN-BC, Assistant Professor, New Jersey City University, Jersey City, N.J.; **Laura Kelly**, PhD, RN, Associate Professor, Monmouth University, West Long Branch, N.J.

Lessons from Oz

Assuring Capabilities for Future Nursing Education & Practice



Page 32

PNEG.info

POSTERS

LGBT Teaching Strategies: Creating Cultural Competence in Caring for Sexual and Gender Minorities

Pamela J. Levesque, DNP(c), MS, APRN, FNP-BC, CNE, DNP Student, Regis College, Weston, Mass.

Click your Ruby Slippers and Follow the Yellow Brick Road to Active Learning

Susan L. Lindner, MSN, RNC-OB, Clinical Assistant Professor, Virginia Commonwealth University, School of Nursing, Chester, Va.

Team Based Learning: An Innovative Approach to Teaching Maternal Newborn Nursing Care

Paula M. Lubeck, MSN, RN, Instructor, South Dakota State University, Sioux Falls, S.D.; **Heidi A. Mennenga**, PhD, RN, Assistant Professor, South Dakota State University, Sioux Falls, S.D.

Longitudinal Evaluation of an Unresponsive Patient Educational Module for Undergraduate Nursing Students Using High-Fidelity Patient Simulation

Marian Florence Luctkar-Flude, MScN, RN, PhD (student), Lecturer, Queen's University, School of Nursing Kingston, Ontario

The Maternity Nursing Classroom: Ripe for Application of QSEN Competencies

Sue H. Mahley, MN, RN, WHNP-BC, CNE, Assistant Professor of Nursing, Research College of Nursing, Kansas City, Mo.

Follow the Yellow Brick Road: the MAP to Student Success

Kathleen Sweeney Malic, MA, RN, Chair/Coordinator, Professor of Nursing, Prairie State College, Chicago Heights, Ill.

Early Encounters: Using National Requirements and Recommendations to Support an Equitable Practice Environment for New Graduates in an RN Residency Program

Cheryl Mallory, BSN, RN-BC, Manager, Versant, St. Petersburg, Fla.

An Innovative Nursing Professional Development and Academic Partnership: Implementing Dedicated Education Units

Maribel M. Marquez-Bhojani, MS, BSN, RN-BC, Clinical Educator, University of Texas Medical Branch, Houston, Tex.; **Patricia L. Richard**, PhD, RN, Associate Professor and Associate Dean for Undergraduate Program & Education Technology, University of Texas Medical Branch, Galveston, Galveston, Tex

Continuing Competence Requirements: A Survey of Nursing Specialty Certification Boards and State and Territorial Boards of Nursing

David R. Marshall, JD, MSN, RN, CENP, NEA-BC, Chief Nursing and Patient Care Services Officer, University of Texas Medical Branch; DNP Student, Texas Tech University Health Sciences Center School of Nursing, Galveston, Tex.

Virtual Simulation in Nursing Education

Diann L. Martin, PhD, RN, National Director of Nursing, Concorde Career College, Wilmett, Ill.

Eyes Wide Open: Engaging Students in Leadership Behavior to Promote Leadership Competency

Pamela G. Martin, MN, APRN-CNS, Instructor of Nursing, Wichita State University, Wichita, Kan.

Crucial Conversations in Nursing: Cultural Competence

Colleen E. Marzilli, DNP, MBA, RN-BC, CCM, APHN-BC, CNE, Assistant Professor, The University of Texas at Tyler, Tyler, Tex.

A Commitment to Communication: Notes for Nursing

Mary C. McCarthy, BSN, RN-BC, Patient Education Coordinator, Mercy Hospital, Iowa City, Iowa

Service Learning in the Care of Elders in New Orleans

Barbara R. McClaskey, PhD, MN, APRN, CNS-BC, Professor of Nursing, Pittsburg State University, Pittsburg, Kan.

Lessons from Oz

Assuring Capabilities for Future Nursing Education & Practice



Page 33

PNEG.info

POSTERS

Safe Patient Handling and Transfers: A Gait Belt Project

Jennifer L. McCord, RN, BSN, CRRN, University of Missouri-Kansas City Graduate Student, California, Mo.

Team-Based Learning: Transform Your Classroom!

Heidi A. Mennenga, PhD, RN, Assistant Professor, South Dakota State University, Brookings, S.D.

Student Perceptions of Digital Textbooks: A Pilot Study

Heidi A. Mennenga, PhD, RN, Assistant Professor, South Dakota State University, Brookings, S.D.

Nurse to Nurse Consult

Meredith Elspeth Mullen, BSN, RN, Nurse Educator, Shawnee Mission Medical Center, Shawnee Mission, Kan.; **Adam S. Filipowski**, BSN, RN, Charge Nurse / Clinical Nurse Educator, Shawnee Mission Medical Center, Shawnee Mission, Kan.

A Narrative Thematic Analysis of Baccalaureate Nursing Students' Nurse-Patient Clinical Reflections

Jessica L. Naber, PhD, RN, Assistant Professor, Murray State University, Almo, Ky.

Top Guns: Creating and Sustaining Blood Culture Aces in the ED

Paula M. Neira, JD, BSN, RN, CEN, Nurse Educator, Department of Emergency Medicine, The Johns Hopkins Hospital, Baltimore, Md.

Working with Interpreters: The Perils

Marlene V. Obermeyer, MA, RN, Continuing Education Coordinator, Wichita Area Technical College, Wichita, Kan.

Developing Research Critique Skills and Integration of Genomics into a Nursing Research Class Through Mock Journal Clubs

Ruth C. Ohm, PhD, RN, Associate Professor, Baker University School of Nursing, Topeka, Kan.; **Loanne Martin**, MS, RN, Assistant Professor, Program Manager, Baker University School of Nursing, Topeka, Kan.

Nursing Students Use Poster Presentations as a Tool to Enhance Professional Writing Skills

Jamie Parrott, BSN, CCRN, Graduate Teaching Assistant, University of Missouri Sinclair School of Nursing, Columbia, Mo.

Active Learning Strategies for Nurse Educators

Sherry L. Payne, MSN, RN, CNE, IBCLC, Executive Director, Uzazi Village, Overland Park, Kan.

Genetics and Genomics for RNs: A Request and A Response

Deborah Kay Peetz, MSN, RN, Assistant Professor, Viterbo University, La Crosse, Wis.

I Told Them, So Why Don't They Know It?

Pamela Pfeifer, MS, RN-BC, Manager, Clinical Training, Northwestern Memorial HealthCare, Chicago, Ill.

Studio Pop! A Seminar Adjunct to Interprofessional Practice Clinical

Christina J. Phillips, DNP, APRN, FNP-C, Clinical Instructor, University of Kansas School of Nursing, Kansas City, Kan.; **Jana K. Zaudke**, MD, Assistant Professor, University of Kansas School of Medicine, Kansas City, Kan.

Assessing Student Attitudes Before and After an Interprofessional Practice Experience

Christina J. Phillips, DNP, APRN, FNP-C, Clinical Instructor, University of Kansas School of Nursing, Kansas City, Kan.; **Jana K. Zaudke**, MD, Assistant Professor, University of Kansas School of Medicine, Kansas City, Kan.

Lessons from Oz

Assuring Capabilities for Future Nursing Education & Practice



Page 34

PNEG.info

POSTERS

Improving Cultural Competency in Our Future Nursing Workforce - Results of National Survey of Schools of Nursing

Lynelle M. Phillips, MPH, RN, Instructor, University of Missouri Sinclair School of Nursing, and University of Missouri MPH Program, Columbia, Mo.

Sustain Competent Learners and Practitioners: Understanding the Mystique of E-Mentoring

Theresa Marie Pietsch, PhD, RN, CNE, CRRN, Assistant Professor, Neumann University, Haddon Heights, N.J.

Embracing Smart Phones in Nursing Classrooms

Theresa Marie Pietsch, PhD, RN, CNE, CRRN, Assistant Professor, Neumann University, Haddon Heights, N.J.

Is There Room for Nursing in Medical Education? Pilot of a Case-Based Curriculum

Katherine A Pischke-Winn, MSN, MBA, RN, Magnet Program Director, University of Chicago Medical Center, Elmhurst, Ill.

Dysrhythmia for the 21st Century: Saving Big Bucks by Making P-Waves Fun Again

M. Greta L. Price, BSN, RN, PCCN, Education Specialist, University of Kansas Hospital, Kansas City, Kan.; **Janet E. Marts**, MSN, CCRN, Unit Educator, University of Kansas Hospital, Kansas City, Kan.

Tobacco Control Education: Strategies to Address Health Policy and Nursing Interventions

Janice Putnam, PhD, RN, Professor, University of Central Missouri, Warrensburg, Mo.; **Marcia J. Sholl**, MSN, RN, Assistant Professor of Nursing, University of Central Missouri, Warrensburg, Mo.; **Anna Fedkina**, MSN, RN, Faculty, University of Central Missouri, Department of Nursing, Warrensburg, Mo.

Let's Go to the Land of Oz...Not Kansas

Mindy R. Raetz, ADN, RN, RN/Shift Manager/ED Educator, Phelps County Regional Medical Center, Rolla, Mo.; **Suzanne M. Weckman**, BSN, RN, CEN, RN/Shift Manager/Trauma Coordinator, Phelps County Regional Medical Center, Rolla, Mo.

Emotions and Learning Described by Sophomore Nursing Students Reflecting on Their Simulation Experience

Rachel A. Ramsey, MS, RN, Clinical Assistant Professor, Indiana University–Purdue University, Fort Wayne, Ind.; **Cheryl Lynn Rockwell**, MN, CCRN, Clinical Assistant Professor, Indiana University–Purdue University, Fort Wayne, Ind.

Reflection and Realization of a Scholarly Culture

Jan M. Rice, PhD, MSN, RN, Associate Professor & Associate Dean for Graduate Programs, Graceland University School of Nursing, Independence, Mo.; **Nancy Crigger**, PhD, MA, FNP-BC, Associate Professor, Graceland University, Independence, Mo.; **Wilaiporn Rojjanasrirat**, PhD, RNC, IBCLC, Associate Professor, Graceland University, Independence, Mo.

Registered Nurses' Perceptions of Health Literacy and Its Effect on Patient Self-Efficacy and Patient Healthcare Decisions: Implications for Practice

Margaret Carter Richey, EdD, MSN, BSN, RN, Associate Professor of Nursing, Benedictine University, Lisle, Ill.

Results of a National Concept-Based Curricula Survey: Insight and Outcomes

Karin K. Roberts, PhD, RN, CNE, Manager Nursing Education and Curriculum, Assessment Technologies Institute, Leawood, Kan.; **Sheryl Kay Sommer**, PhD, RN, CNE, Vice President Nursing Education, Assessment Technologies Institute, Leawood, Kan.

Professional Development: Having the Heart and Courage to Enhance the Knowledge

Linda J. Rus, MSN, RN-BC, Manager Education Services, Bronson Methodist Hospital, Kalamazoo, Mich.; **Gwendolyn L. Boyle**, BSN, RN-BC, Education Services Instructor, Bronson Methodist Hospital, Kalamazoo, Mich.; **Anne M. Maihofer**, MSN, RN-BC, CCRN, Clinical Instructor, Bronson Methodist Hospital, Kalamazoo, Mich.

Lessons from Oz

Assuring Capabilities for Future Nursing Education & Practice



Page 35

PNEG.info

POSTERS

Understanding Learner Outcomes in an Interactive Multi-Media Online Course

Donna Russell, PhD, Academic Technology Liaison, University of Missouri Sinclair School of Nursing, Columbia, Mo.; **Jane M. Armer**, PhD, RN, FAAN, Professor, University of Missouri Sinclair School of Nursing, Columbia, Mo.; **Tamara Gail Coon Sells**, PhD, Adjunct Instructor; Research Specialist, University of Missouri Sinclair School of Nursing, Columbia, Mo.

Follow the Yellow Brick Road to More Competent and Confident Graduate Nurses

Rebecca Sander, MSN, RN, Residency Coordinator, Hays Medical Center, Hays, Kan.; **Celeste Gray**, MSN, RN, Director of Women and Children & Education, Hays Medical Center, Hays, Kan.; **Terry J. Siek**, MSN, RN, NEA-BC, Chief Nursing Officer, Hays Medical Center, Hays, Kan.

Nurse Perceptions of Returning to School: Barriers and Motivations

Wendy L. Sarver, MSN, RN, Research Nurse Coordinator, MetroHealth Medical Center, Avon, Ohio

An Academic-Practice Partnership for Excellence: Developing a Dedicated Education Unit

Rebecca Saxton, PhD, RN, CNE, Associate Professor, Research College of Nursing, Kansas City, Mo.; **Darinda J. Reberry**, MSN, RN, NE-BC, Director of ICU, Research Medical Center, HCA, Kansas City, Mo.; **Ashley Ellen Doyen**, BSN, RN, ICU Staff Nurse, Research Medical Center, Kansas City, MO; **Mln-Anh Do Pham**, Student Nurse, Research College of Nursing, Kansas City, Mo.

Assessment, Planning & Outcomes, Oh My!

Michelle M. Septer, MSN, RN, CPN, Assistant Professor, Graceland University, Independence, Mo.; **Michelle M. Hornack**, MSN, RN, Assistant Professor of Nursing, Graceland University, Independence, Mo.

Championing Quality Improvement with New Graduate RN Engagement

Jean S. Shinnors, PhD, RN-BC, Director for Research, Versant Residencies, Hobe Sound, Fla.

A Look at Concept Mapping in an Associate Degree Nursing Program

Vickie L. Shoumake, MSN, RN, Instructor, Western Kentucky University School of Nursing, Bowling Green, Ky; **Lisa E. Stewart**, MSN, RN, Nursing Instructor, Western Kentucky University School of Nursing, Bowling Green, Ky

Quality Partnership: Combining Education and Practice

Laura Shroyer, MSN, RN, NE-BC, Department Director, Children's Mercy Hospitals and Clinics, Kansas City, Mo.; **Brandi C. Tinney**, BSN, RN, CPN, Core Clinical Instructor, Children's Mercy Hospitals and Clinics, Kansas City, Mo.; **Mary N. Meyer**, MN, RN, Director of Clinical Learning Lab; Clinical Instructor, University of Kansas School of Nursing, Kansas City, Kan.; **Kathleen Louise Welch**, BSN, RN, CMSR, Affiliate Clinical Faculty, University of Kansas School of Nursing, Kansas City, Kan.

Nursing Care Plans versus Concept Maps in the Enhancement of Critical Thinking Skills in Nursing Students Enrolled in a Baccalaureate Nursing Program

Tina M. Sinatra-Wilhelm, RN, DNP, Associate Professor of Nursing, D'Yuoville College, Buffalo, N.Y.

Nurturing & Growing our Young: A Tailored Education Program for New Emergency Department Nurses

Machelle Skinner, MSN, RN, CEN, Assistant Professor, Missouri Western State University, St. Joseph, Mo.

Building Smarts, Hearts, & Courage: A Peer-teaching Model in the Nursing Simulation Lab

Machelle Skinner, MSN, RN, CEN, Assistant Professor, Missouri Western State University, St. Joseph, Mo.

Lessons from Oz

Assuring Capabilities for Future Nursing Education & Practice



Page 36

PNEG.info

POSTERS

Merging a Trio of Technologies to Enhance Learner Engagement Through Simulation

Mindy Stites, MSN, APRN, ACNS-BC, CCNS, CCRN, Critical Care Clinical Nurse Specialist, University of Kansas Hospital, Kansas City, Kan.; **April J. Roche**, MBA, CPEHR, Assistant Director, University of Kansas School of Nursing, Kansas City, Kan.; **Sarah C. Goldsmith**, RN, University of Kansas Hospital, Kansas City, Kan.; **Heidi Michelle Quilty**, BSN, RN, CICU, University of Kansas Hospital, Kansas City, Kan.

Job Satisfaction and Support for Transitions in the Nursing Academy: A Qualitative Study of Tenured Nursing Faculty Who Stay In Academia

Sharon M. Sussman, EdD, RN, MS, MBA-CPA, Assistant Professor, New York Institute of Technology, Rockville Centre, N.Y.

Civility in the Clinical Learning Environment

Bonnie Tecza, MSN, RN, CPN, Nursing School Clinical Manager, Children's Mercy Hospitals and Clinics, Kansas City, Mo.; **Brenda Boots**, MSN, RN, CPN, Clinical Instructor, Children's Mercy Hospitals and Clinics, Kansas City, Mo.

Hospital Employees Helping to Meet the Need for Clinical Instructors

Bonnie Tecza, MSN, RN, CPN, Nursing School Clinical Manager, Children's Mercy Hospital and Clinics, Kansas City, Mo.; **Brenda Boots**, MSN, RN, CPN, Clinical Instructor, Children's Mercy Hospitals and Clinics, Kansas City, Mo.

Inviting Open Communication for Continuous Improvement in the DNP Curriculum

Cynthia Teel, PhD, RN, FAAN, Professor, Associate Dean Graduate Programs, University of Kansas School of Nursing, Kansas City, Kan.; **Diane Whitaker Ebbert**, PhD, APRN, FNP-BC, Assistant Professor, Director, Advanced Practice Programs, University of Kansas School of Nursing, Kansas City, Kan.; **Debbie Ford**, PhD, RNC, IBCLC, Program Director, University of Kansas School of Nursing, Kansas City, Kan.

Creating Strong Nursing Pipelines

Amy R. Thomas, MSN, APRN, FNP, System Director of Nursing Education, Hawaii Pacific Health, Honolulu, Hawaii

I Have My Ruby Slippers---Now What Do I Do? Transition from Clinical Nursing to Associate Degree Nursing Faculty: Perceived Expectations

Linda Joyce Thomas, PhD, MSN, RN, CNE, Associate Professor, Murray State University, Murray, Ky

Transitioning to Practice and Practice Environment Satisfaction

Frances G. Thunberg, DNP, MSN, CPN, CNE, Associate Professor, Barton College, Goldsboro, N.C.; **Cynthia Powers**, DNP, RN-BC, CNN, NEA-BC, Union University, School of Nursing, Germantown, Tenn.; **Sharon I. Sarvey**, PhD, RN, Dean, School of Nursing, Barton College, Wilson, N.C.

Ageism and Its Implications in Baccalaureate Nursing Education

Christine Brunmeier Thurlow, PhD(c), MSN, BSN, Assistant Professor, Research College of Nursing, Kansas City, Mo.

Instruction is the Last Resort! Sorting out the Fuzzies

Robin J. Toms, PhD, MN, RN, NEA-BC, Associate Professor, Texas Woman's University, The Woodlands, Tex.

Teaching, Learning, and Technology: Use of Game-Play as an Active Learning Pedagogy to Critical Thinking and Teamwork

Pamela H. Treister, MSN, CNS, RN, Clinical Instructor, New York Institute of Technology, Old Westbury, N.Y.

Educating Nurses for Cultural and Racialized Understanding

Peggy A. Trewn, PhD, MSN, RN, CNE, Associate Professor, Eastern Michigan University, Grosse Pointe Park, Mich.

Lessons from Oz

Assuring Capabilities for Future Nursing Education & Practice



Page 37

PNEG.info

POSTERS

Nursing School Orientation: Help Students Stay on the Yellow Brick Road and Avoid Flying Monkeys

Sherri L. Ulbrich, PhD, RN, CCRN, Assistant Clinical Professor, University of Missouri Sinclair School of Nursing, Columbia, Mo.

Tomorrow's Leaders—Today's Change: RWJF New Careers in Nursing Scholars as Political Advocates

Sherri L. Ulbrich, PhD, RN, CCRN, Assistant Clinical Professor, University of Missouri Sinclair School of Nursing, Columbia, Mo.

High-Fidelity Simulation in a Nurse Residency Program: Effective Decision-Making to Prevent Failure to Rescue

M. Nancy Van Aman, DNP, RN, FNP-BC, Assistant Professor, Goldfarb School of Nursing at Barnes-Jewish College, St. Louis, Mo.

QSEN Initiative

Doris M. Van Byssum, PsyD, MS, PMHNP-BC, Assistant Professor, University of St. Francis, Joliet, Ill.; **Judy Lau Carino**, MSN, APRN-BC, PCCN, Clinical Instructor, Course Coordinator Professional Nursing Practice III, University of St. Francis, Joliet, Ill.

Ruby Red, Emerald Green, or Brick Yellow: The Effect of Color On the Road of Learning

Suzanne W. Van Orden, MSN, MSEd, RN, Senior Lecturer, Old Dominion University, Norfolk, Va.

Budget Friendly Solutions in a Budget Conscious World

Andrea K. Vance, BSN, RN, NICU Clinical Educator, Shawnee Mission Medical Center, Shawnee Mission, Kan.

Are We In Shawnee Mission Any More?

Andrea K. Vance, BSN, RN, NICU Clinical Educator, Shawnee Mission Medical Center, Shawnee Mission, Kan.

A Look to the Future of Nursing from the Perspective of the Past: A Qualitative Study of Retired Nurses on the IOM Future of Nursing

Naomi R. Vogt, Student Nurse, University of Wisconsin–Eau Claire Eau Claire, Wis.; **Lisa F. Schiller**, PhD, APNP, FNP-BC, Assistant Professor/Nurse Practitioner, University of Wisconsin–Eau Claire Eau Claire, Wis.

Knowledge and Attitudes of Pain Management Among Nursing Faculty

Barbara Ann Voshall, DNP, RN, Professor of Nursing, Graceland University, Blue Springs, Mo.; **Debra Shelestak**, PhD, RN, Kent State University, North Canton, Ohio

Competency Makeover: Lose the Fair

Martha "Marci" A. Walker, MSN, RN-BC, Magnet Program Coordinator/Education Specialist, University of Kansas Hospital, Kansas City, Kan.

IDDM Management in the Hospital with Continuous Insulin Infusion Pumps

Kathleen L. Welch, RN, CMSRN, BS, Staff Nurse/Clinical Faculty, University of Kansas Hospital, Kansas City, Kan.

Thinking & Acting & Doing! Oh my! Assessment and Development of Essential Skills of Newly Hired Oncology RNs

Nicole West, BSN, RN, OCN, RN/Clinical Educator, University of Colorado Health–Poudre Valley Hospital, Fort Collins, Colo.

An Accelerated Track Program for Non-Degree Holders

Jeana Renee Wilcox, PhD, RN, CNS, CNE, Associate Dean for Undergraduate Programs and Community Affairs, Oklahoma University College of Nursing, Oklahoma City, Okla.; **Claudia Horton**, PhD, RN, Dean and Professor, Graceland University, Independence, Mo.

Following the Yellow Brick Road...to Rural Health Care Excellence

Venita J. Winterboer, MS, RN, Instructor, Semester Coordinator, South Dakota State University, Brookings, S.D.; **Lois Tschetter**, EdD, RN, CNE, IBCLC, Associate Professor, South Dakota State University, Brookings, S.D.

Lessons from Oz

Assuring Capabilities for Future Nursing Education & Practice



Page 38

PNEG.info

POSTERS

Horse of a Different Color—Incorporating Smart Technology and Social Media into the Curriculum

Lea Ashleigh Wood, MSN, RN, Coordinator of the Essig Clinical Simulation Learning Center, University of Missouri Sinclair School of Nursing, Columbia, Mo.

Learn Teamwork Techniques through a Team Research Project in Undergraduate Nursing Research Education

Meng Zhao, PhD, RN, Assistant Professor, Texas A&M University at Corpus Christi, Corpus Christi, Tex.

Forget the Wizard! The Real Magic is Linking Arms With a CNS to Travel to the Land of Outcomes

Kimberly Joy Ziegler, MS, RN, CNS, Service Educator Adult Med-Surg Nursing, URMC Strong Memorial Hospital, Rochester, N.Y.; **Heather L. Menchel**, MS, RN, NE-BC, OCN, Associate Director of Medical & Surgical Nursing, University of Rochester Medical Center, Rochester, N.Y.

Pay No Attention to the Flying Monkeys: Helping NURS Students Calm their Test Anxiety Demons

Patty Zuccarello, MEd, Associate Dean, Faculty Affairs, Prairie State College, Chicago Heights, Ill.

Lessons from Oz

Assuring Capabilities for Future Nursing Education & Practice



PNEG.info

WESTIN KANSAS CITY AT CROWN CENTER



Lessons from Oz: 40th Annual National PNEG Conference

October 17–20, 2013 • The Westin Kansas City at Crown Center • Kansas City, Missouri

1

Please Print

Full name (First, MI, Last, Suffix) _____

Send my confirmation and receipt to this email address:

Email _____ Job title _____

Priority code (Please copy this code located above your name on the mailing label.) _____

Credentials _____ Specialty _____

Institution or firm _____

Address (Home or Work) _____

City, State, ZIP _____

Daytime phone (_____) _____ Evening phone (in case of last minute event changes) (_____) _____

Please do not include my information on the participant roster. Please remove my name from the mailing list.

2

Fees

	By Sept. 6	After Sept. 6
<input type="checkbox"/> Full Conference Registration	\$529	\$549
<input type="checkbox"/> Friday registration only	\$229	\$249
<input type="checkbox"/> Saturday registration only	\$229	\$249
<input type="checkbox"/> Sunday registration only	\$125	\$145
<input type="checkbox"/> Friday and Saturday registration only	\$400	\$420
<input type="checkbox"/> Saturday and Sunday registration only	\$325	\$345

Pre-Conferences

<input type="checkbox"/> Liberating Structures	\$259	\$279
<input type="checkbox"/> ANCC Workshop	\$259	\$279
<input type="checkbox"/> How to Make Healthcare Materials	\$159	\$179
<input type="checkbox"/> Fostering Concept-Based Learning	\$259	\$279
<input type="checkbox"/> Improving Learning Outcomes	\$159	\$179
<input type="checkbox"/> "Savor Kansas City" Saturday Social Event . . .	\$ 45	
<input type="checkbox"/> Box Lunch for PNEG meeting	\$ 15	

Total due \$ _____

Privacy Policy

KU Continuing Education does not share, sell, or rent its mailing lists. You have our assurance that any information you provide will be held in confidence by KU Continuing Education. We occasionally use mailing lists that we have leased. If you receive unwanted communication from KUCE, it is because your name appears on a list we have acquired from another source. In this case, please accept our apologies.

Refund and Cancellation Policy

A full refund of registration fees, less a \$15 administrative fee, will be available if requested in writing and received by October 3, 2013. No refunds will be made after that date. A \$30 fee also will be charged for returned checks. **(Please note that if you fail to cancel by the deadline and do not attend, you are still responsible for payment.)** KU Continuing Education reserves the right to cancel the Lessons from Oz: 40th Annual National PNEG Conference and return all fees in the event of insufficient registration. The liability of the University of Kansas is limited to the registration fee. The University of Kansas will not be responsible for any losses incurred by registrants, including but not limited to airline cancellation charges or hotel deposits.

3

Waiver

I do not consent to the use of my name and/or photo in a news release or other marketing initiatives by the University of Kansas.

Nondiscrimination Policy

The University of Kansas prohibits discrimination on the basis of race, color, ethnicity, religion, sex, national origin, age, ancestry, disability, status as a veteran, sexual orientation, marital status, parental status, gender identity, gender expression and genetic information in the University's programs and activities. The following person has been designated to handle inquiries regarding the non-discrimination policies: Director of the Office of Institutional Opportunity and Access, IOA@ku.edu, 1246 W. Campus Road, Room 153A, Lawrence, KS, 66045, (785) 864-6414, 711 TTY.

4

Payment

Registrations will not be processed until payment is received. Payment for early bird registrations must be received on or before the early bird deadline.

Check enclosed, **payable to KU Medical Center.**

MasterCard VISA (no other cards accepted)

Card # _____ Exp. _____

Name on card (print) _____

Cardholder's phone # _____

Program Accessibility

We accommodate persons with disabilities. Please call 785-864-5823 or mark the space on the registration form, and a KU Continuing Education representative will contact you to discuss your needs. To ensure accommodation, please register at least two weeks before the start of the conference. See the nondiscrimination policy above.

The University of Kansas Medical Center is an AA/EO Title IX institution.

5

Easy Ways to Register

Mail Complete the registration form and mail with payment to:
The University of Kansas Continuing Education
Registrations
1515 Saint Andrews Drive, Lawrence, Kansas 66047-1619

Phone Toll-free 877-404-5823 or 785-864-5823

Fax 785-864-4871

TDD 800-766-3777

Web pneg.info/registration



Special Accommodation

If you will need special accommodation, please mark the box above, and a member of the Continuing Education staff will contact you.
CN142001/JCN140110